



AirTouch Secure Smart Station

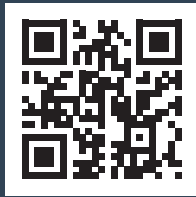
User Guide

Making the
pleasure of
home comfort
an easy
experience



**Thank you for trusting
AirTouch Secure.**

**Need further help?
Need the App or want to
share your experience?
Visit the link or scan the
QR code below:**



[www.airtouch.net.au/
welcome-secure](http://www.airtouch.net.au/welcome-secure)

CONTENTS

Introduction	4
Product & Key Functions	5
Specifications	6
Set Up with AirTouch 5	7
Set Up with App	9
General	13
Contact Us.....	14
Warranty.....	15

INTRODUCTION



IMPORTANT SAFETY INFORMATION

Please read all safety warnings before operating this product. Failure to follow these instructions may result in injury or damage. Product use and environmental factors may impact published performance and ranges for connectivity and battery usage.

LIABILITY AND DISCLAIMER

All specifications and procedures are correct at time of publication, but are subject to change without notice. Please read the instructions before installing. Polyaire Pty Ltd does not accept any responsibility for loss or damage that may occur as a result of the incorrect installation or operation of this AirTouch Secure product.

Welcome to the AirTouch Secure Smart Station, your smart home security gateway to seamlessly connect and control all AirTouch Secure devices.

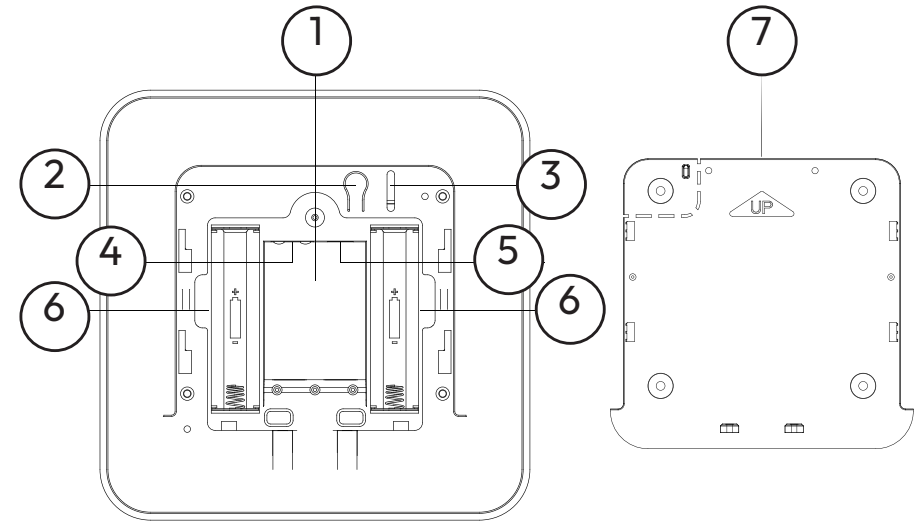
Monitor, manage, and receive alerts from every connected device — anytime, anywhere.

- Connect up to 500+ sensors in your house
- 30m typical indoor range
- 18-hour backup battery (optional)
- Secure, stress-free, and simple to use

COMPLIANCE

- RCM 
- Cyber Security Act 2024 & ETSI EN 303 645
- Australian Consumer Law & safety standards
- Origin: China
- Distributed in Australia by Polyaire Pty Ltd.

PRODUCT & KEY FUNCTIONS



1. LED indicator (Front of Station)
2. Power button
3. Tamper protection button
4. Ethernet port
5. Power adapter port
6. Optional battery backup slots
7. Mounting bracket*

* Mounting Bracket Warning

This product may be mounted using screws, fixings, or suitable adhesive mounting solutions such as 3M tape.

If you prefer to drill-mount your product, please ensure the correct tools and fixings are used and that installation is carried out carefully. Installation may require drilling or adhering to walls or other surfaces. Improper installation may cause damage to property.

The AirTouch Secure Range warranty does not cover damage to walls, surfaces, or property resulting from installation, mounting, removal, or use of this product. Installation is undertaken at the user's own risk.

Visit help.airtouch.net.au for a step-by-step installation guide.

SPECIFICATIONS

- Size:
170 × 170 × 37mm
- Protocols:
CoSS/Wi-Fi/Zigbee
- 30m typical indoor range
- Power supply:
DC 12V or 48V PoE
- Backup power:
Up to 18hrs*
2 × 18650 batteries* (optional)
- Operating temp:
-5~45°C
- Operating humidity:
5~90%
- Material: ABS+PC
- Device capacity:
More than 500 connected sensors
- For indoor use only
- Requires AirTouch 5 or above with AirTouch Home App installed for operation

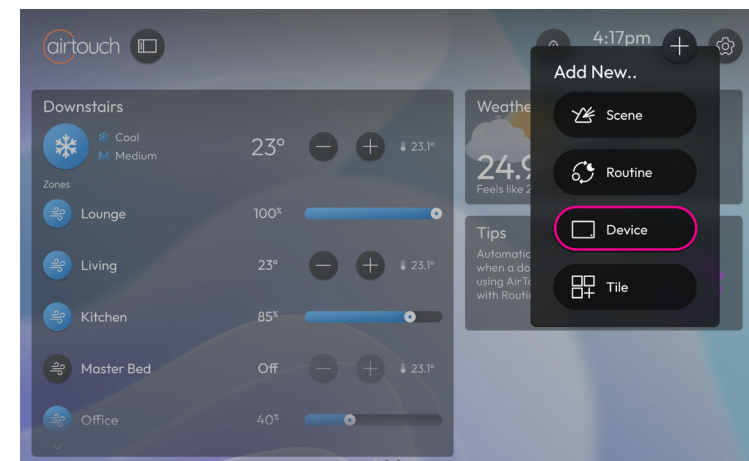
GETTING STARTED

Set Up with AirTouch 5*

*AirTouch Home must be installed on your AirTouch 5 Console before set up.
Installation can be completed from the AirTouch 5 settings menu

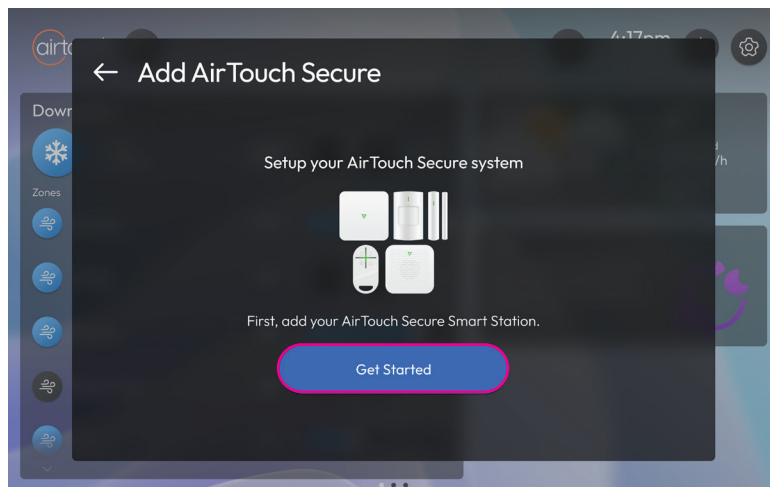
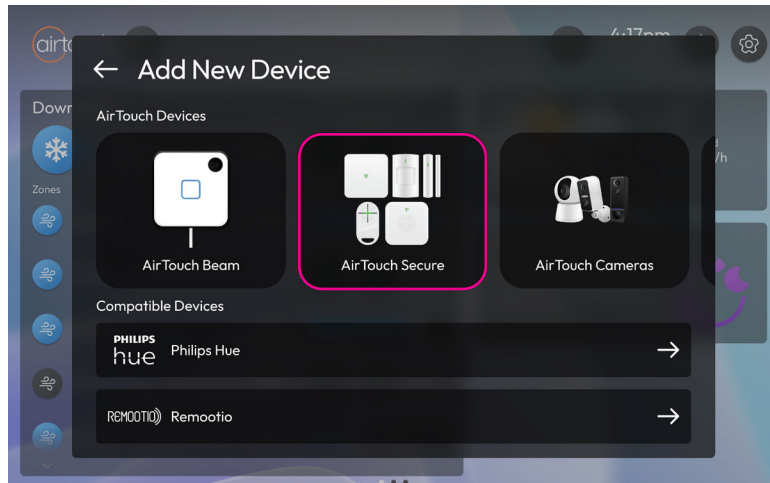
1. Setup device

On the main screen of the AirTouch 5 console, select the '+' icon located in the top right corner, then choose 'Device' from the drop down menu.



2. Select device

After the “Add New Device” page loads select “AirTouch Secure.” Follow the on-screen prompts to complete the installation and connect the device to AirTouch 5.



Set Up with App*

*AirTouch Home must be installed on your AirTouch 5 Console before you can install the AirTouch Home smart device app.

1. Download

Install the AirTouch Home app for both iOS and Android operating systems. Search for the name “AirTouch Home” in the App Store or Google Play, or scan the QR code to download the App.



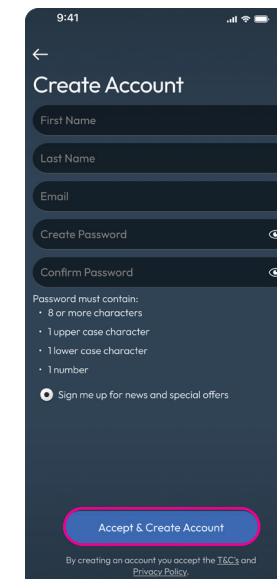
2. Create an Account / Log In

To sign up, open the app, create an account, verify by email, and add your device; to log in, enter your credentials and tap “Login.”

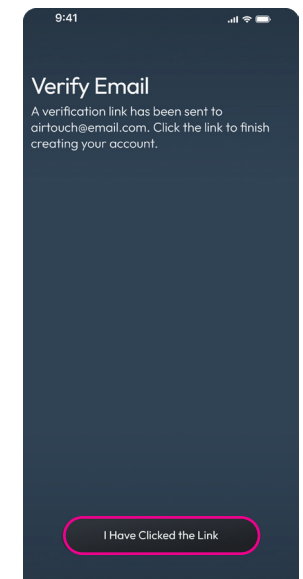
Create an account



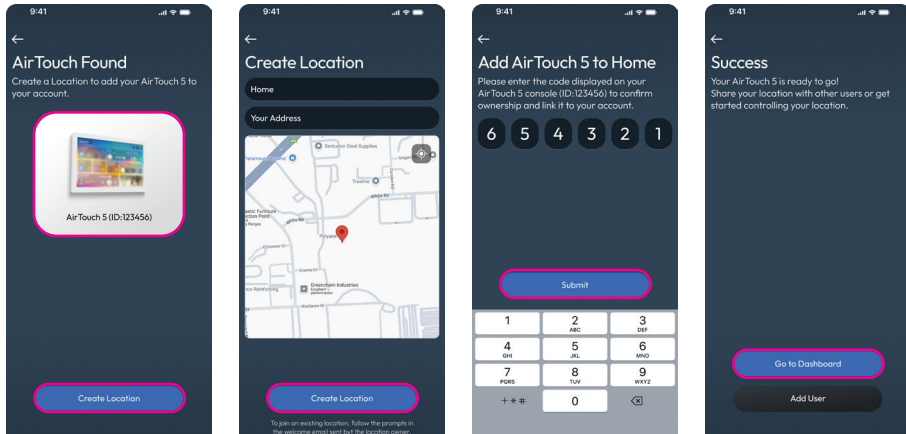
Tap “Create Account”



Fill out the required fields Tap on “Accept & Create Account”



Open the email and click the “Verify Email” link to activate your account.



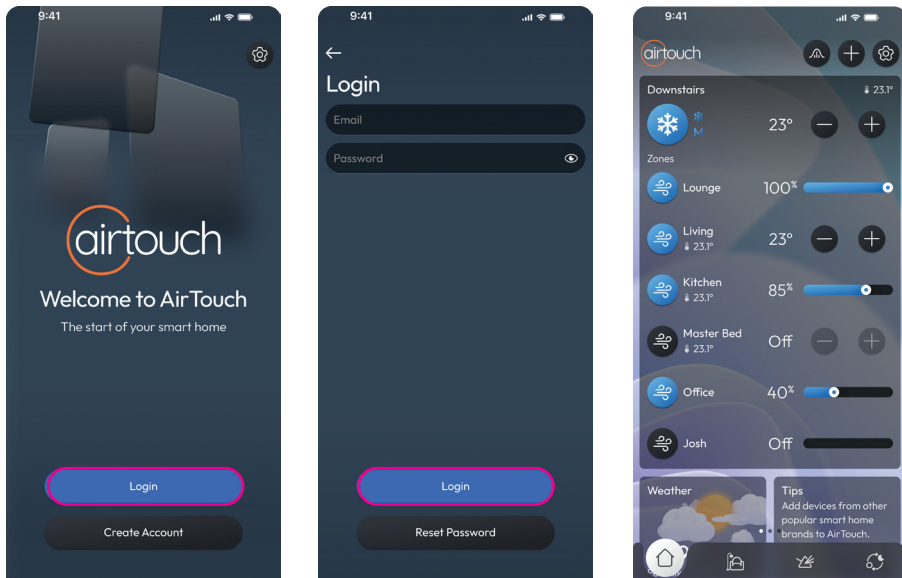
Add your AirTouch device to the account

Create a Location (e.g. your home)

Sync Your AirTouch 5 Devices

You're All Set - tap on "Go to Dashboard"

Log in



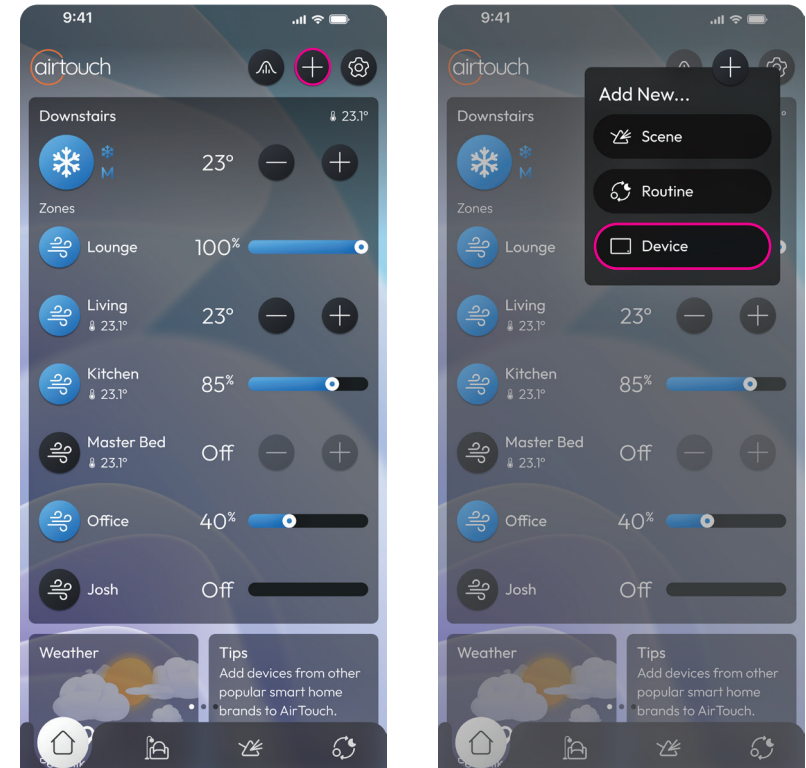
Tap "Login" on the Home Screen

Enter Your Credentials & Tap "Login" You'll be taken to the Dashboard

Dashboard

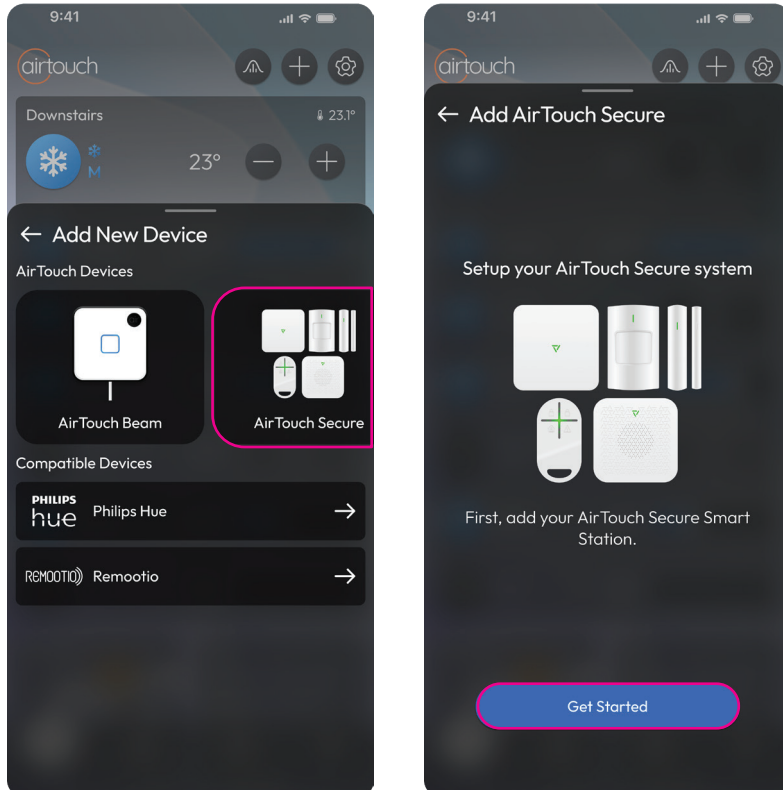
3. Add device

Login to the AirTouch Home app and select the '+' icon located in the top right corner, then choose 'Device' from the drop down menu.



4. Select device

After the “Add New Device” page loads select “AirTouch Secure.” Follow the on-screen prompts to complete the installation and connect your device to AirTouch Home.



We are constantly adding new Smart Home integrations to AirTouch to enhance the system's capabilities and your home living experience. Visit airtouch.net.au for updates.

GENERAL

LED Status Indicators

Event	LED Indicator	Colour Code	Pattern
Power on	White breathing		Breathing (fade in/out)
Ethernet connecting	Yellow breathing		Breathing (fade in/out)
Online unpaired	Green breathing		Breathing (fade in/out)
Disarmed	Blue		Solid
Armed (Away)	Red		Solid
Alarm	Red flashing		Flashing (rapid on/off)
Home	Orange		Solid

Event Description

1. Power On, Ethernet connecting & Online unpaired (Unregistered) events are default events without any changes
2. Online unpaired is the current state of Smart Station has no integration with AirTouch Home
3. Disarmed event - integrated with AirTouch 5 with Disarmed state
4. Armed event - AirTouch Secure state set to Armed (Away) state
5. Alarm event - Security routine triggered in Armed (Away) state
6. Partial armed event - AirTouch Secure state set to Home state

Have any questions or need assistance?

Visit our Support Centre at help.airtouch.net.au to find the answers you're looking for — or connect with **Team AirMate** for all your AirTouch support enquiries.

Scan the QR code to visit our help page



WARRANTY

Thank you for purchasing this AirTouch product. In order to protect your rights, please read the following content carefully: The warranty period of our company's products is three years from the date of purchase or longer if local laws impose a longer minimum term, in which case the minimum term is the warranty period. During the warranty period, any faults caused by the product itself or for quality problems that arise under normal usage, AirTouch will provide a free replacement.

- Read all instructions before use. Failure to comply may result in injury or void warranty.
- To read our T&Cs, visit www.airtouch.net.au/airtouch-terms-conditions



Polyaire Pty Ltd.
Naylor House, Level 3 North
191 Pulteney Street, Adelaide,
South Australia, 5000
(08) 8349 8466

polyaire.com.au
airtouch.net.au

