



AirTouch Secure Key Fob

User Guide

Making the
pleasure of
home comfort
an easy
experience



Thank you for trusting AirTouch Secure.

Need further help?
Need the App or want to
share your experience?
Visit the link or scan the
QR code below:



[www.airtouch.net.au/
welcome-secure](http://www.airtouch.net.au/welcome-secure)

CONTENTS

Introduction	4
Product & Key Functions	5
Specifications	6
Set Up with AirTouch 5	7
Set Up with App	9
Replacing the Battery	13
Contact Us	14
Warranty	15

INTRODUCTION

WARNING THIS PRODUCT CONTAINS A BUTTON BATTERY

If swallowed, a lithium button battery can cause severe or fatal injuries within 2 hours. Keep batteries out of reach of children. If you think batteries may have been swallowed or placed inside any part of the body, seek immediate medical attention. Keep batteries out of reach from children.

IMPORTANT SAFETY INFORMATION

Please read all safety warnings before operating this product. Failure to follow these instructions may result in injury or damage. Product use and environmental factors may impact published performance and ranges for connectivity and battery usage.

LIABILITY AND DISCLAIMER

All specifications and procedures are correct at time of publication, but are subject to change without notice. Please read the instructions before installing. Polyaire Pty Ltd does not accept any responsibility for loss or damage that may occur as a result of the incorrect installation or operation of this AirTouch Secure product.

Welcome to the AirTouch Secure Key Fob, a wireless remote for your AirTouch Secure system. The key fob allows you to arm, disarm, set home modes, or trigger a panic alarm — all with a single press. Enjoy convenient security control from your pocket, bag, or keychain.

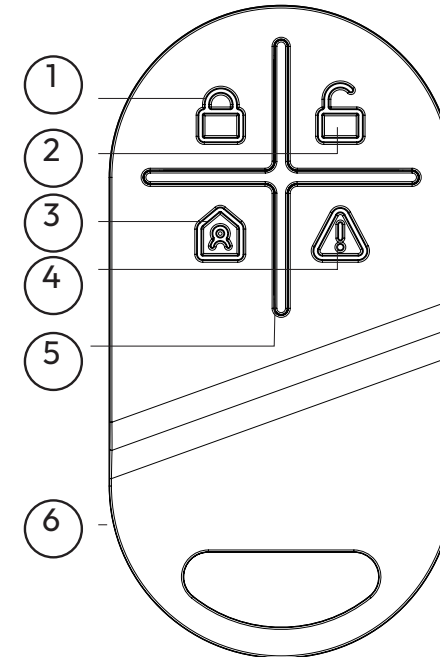
- 30m typical indoor range
- Up to 10-year battery life

Minimal design for intuitive comfort and effortless reliability, to relax and enjoy your space.

COMPLIANCE

- RCM 
- Cyber Security Act 2024 & ETSI EN 303 645
- Australian Consumer Law & safety standards
- Origin: China
- Distributed in Australia by Polyaire Pty Ltd.

PRODUCT & KEY FUNCTIONS



1. Arm button
2. Disarm button
3. Home button
4. Panic button
5. Indicator
6. Battery compartment (back of Key Fob)

SPECIFICATIONS

- Size:
74 × 39 × 12mm
- Weight:
18g (without battery)
- Comm. protocol:
CoSS
- Comm. distance:
30m typical indoor range
- Operating temp:
-10~+55°C
- Operating humidity:
5~90%
- Battery type:
CR2450 3V*
- Standby time:
Up to 10-year battery life
- Requires AirTouch 5 or above with AirTouch Home App installed for operation



***WARNING THIS PRODUCT CONTAINS A BUTTON BATTERY**

If swallowed, a lithium button battery can cause severe or fatal injuries within 2 hours. Keep batteries out of reach of children. If you think batteries may have been swallowed or placed inside any part of the body, seek immediate medical attention.

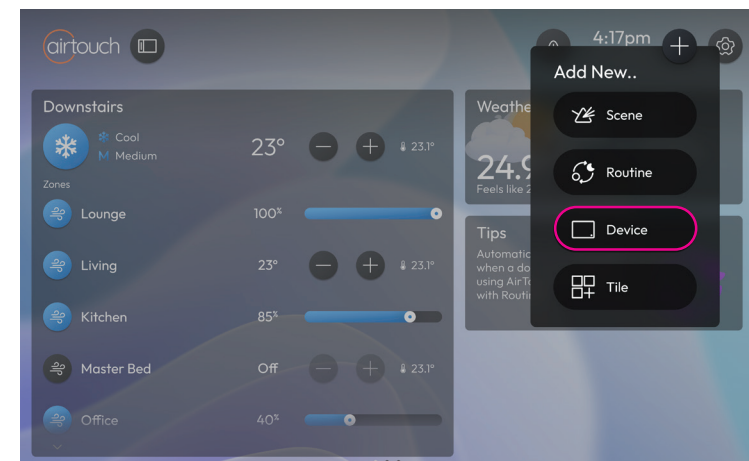
GETTING STARTED

Set Up with AirTouch 5*

*AirTouch Home must be installed on your AirTouch 5 Console before set up. Installation can be completed from the AirTouch 5 settings menu.

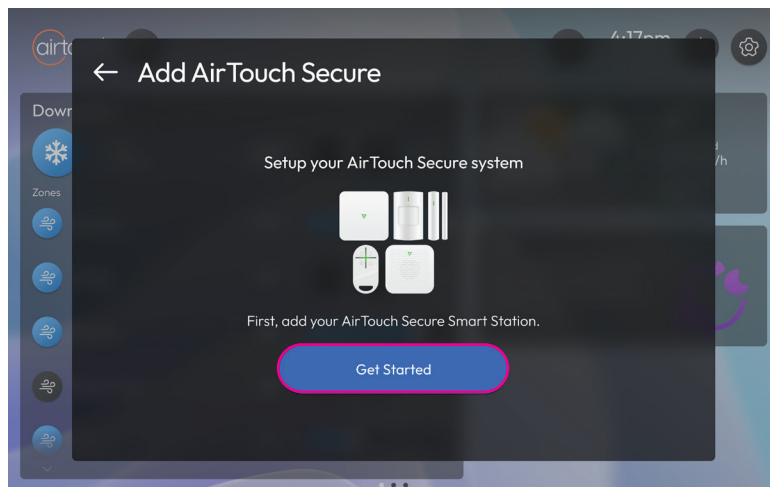
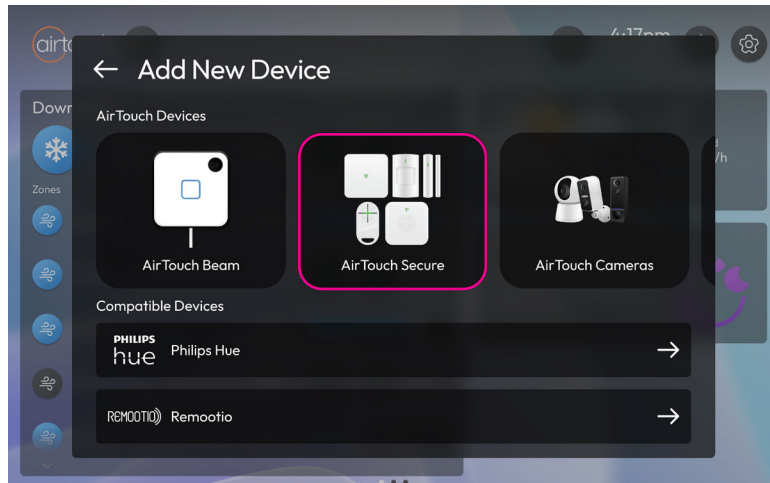
1. Setup device

On the main screen of the AirTouch 5 console, select the '+' icon located in the top right corner, then choose 'Device' from the drop down menu.



2. Select device

After the “Add New Device” page loads select “AirTouch Secure.” Follow the on-screen prompts to complete the installation and connect the device to AirTouch 5.



Set Up with App*

*AirTouch Home must be installed on your AirTouch 5 Console before you can install the AirTouch Home smart device app.

1. Download

Install the AirTouch Home app for both iOS and Android operating systems. Search for the name “AirTouch Home” in the App Store or Google Play, or scan the QR code to download the App.



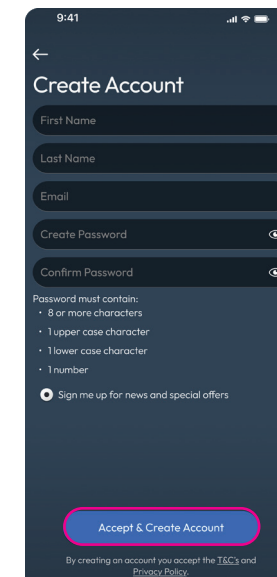
2. Create an Account / Log In

To sign up, open the app, create an account, verify by email, and add your device; to log in, enter your credentials and tap “Login.”

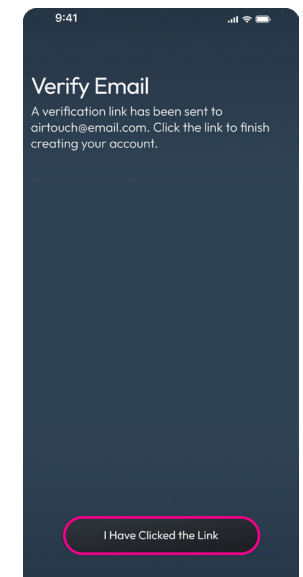
Create an account



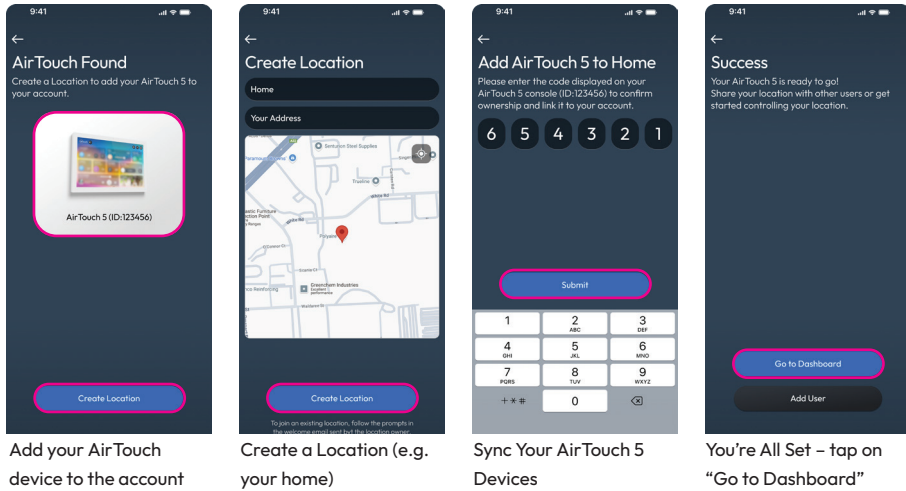
Tap “Create Account”



Fill out the required fields Tap on “Accept & Create Account”



Open the email and click the “Verify Email” link to activate your account.



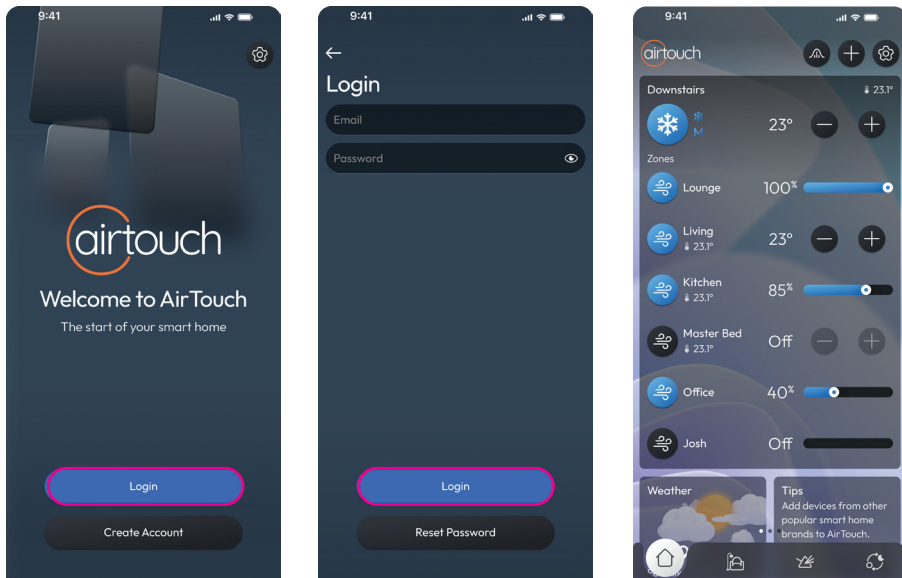
Add your AirTouch device to the account

Create a Location (e.g. your home)

Sync Your AirTouch 5 Devices

You're All Set - tap on "Go to Dashboard"

Log in



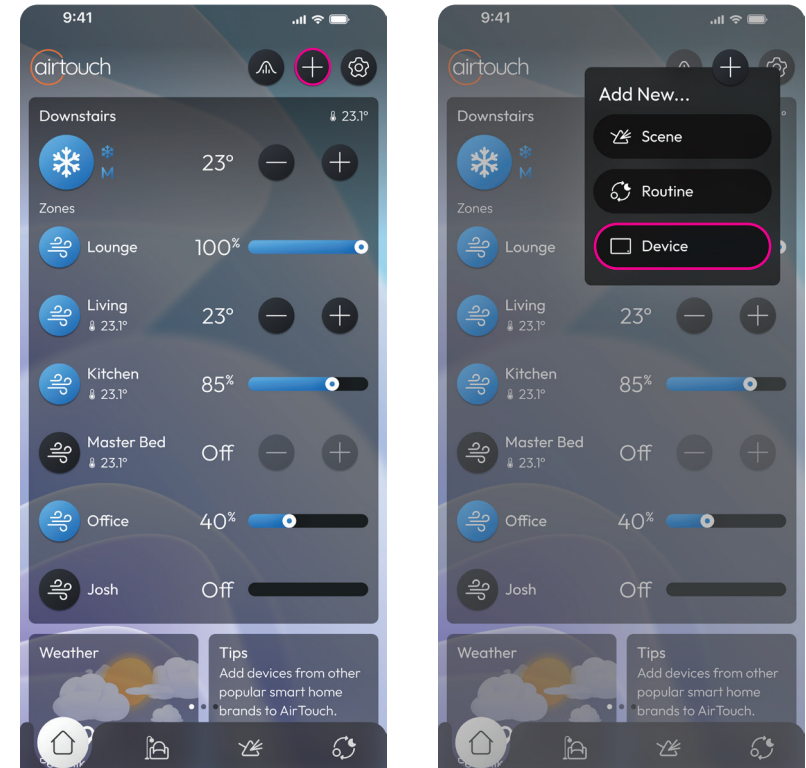
Tap "Login" on the Home Screen

Enter Your Credentials & Tap "Login" You'll be taken to the Dashboard

Dashboard

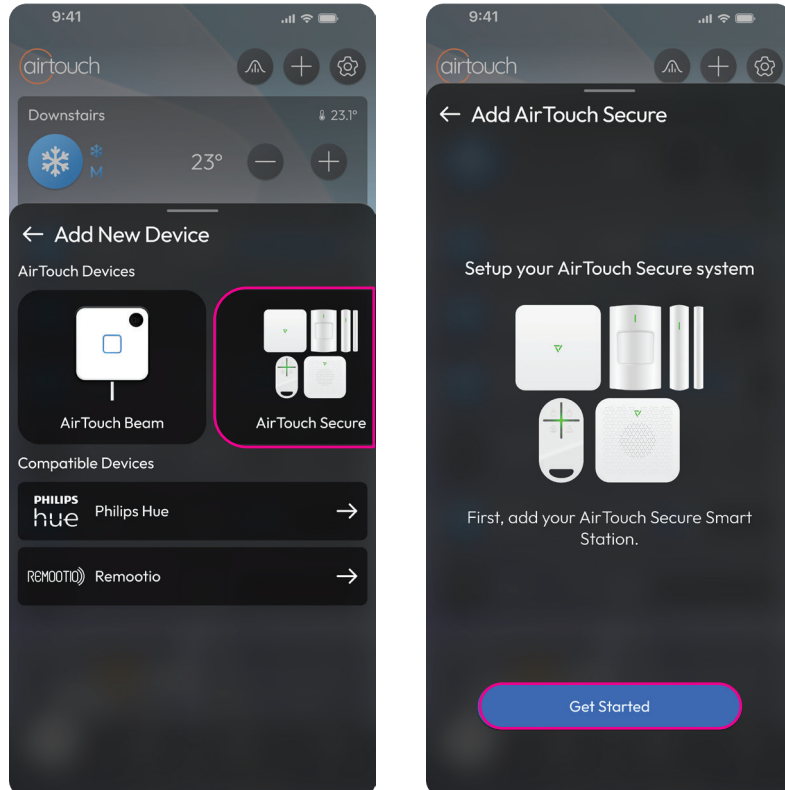
3. Add device

Login to the AirTouch Home app and select the '+' icon located in the top right corner, then choose 'Device' from the drop down menu.



4. Select device

After the “Add New Device” page loads select “AirTouch Secure.” Follow the on-screen prompts to complete the installation and connect your device to AirTouch Home.



REPLACING THE BATTERY

What You'll Need:

- A small Phillips-head screwdriver
- A plastic pry tool (or fingernail)
- A CR2450 3V coin cell battery

Step-by-Step Guide

1: Remove the Screws

- Use a Phillips-head screwdriver to remove the Two Small Black Screws on the back of the Key Fob.
- Set the screws aside safely.

2: Gently Pry Open the Case

- After removing the screws, the shell may still be slightly snug.
- Use a plastic pry tool or fingernail to gently separate the two halves along the seam.
- Avoid using metal tools to prevent scratching or damaging the casing.

3: Remove the Old Battery

- Locate the CR2450 3V battery inside.
- Gently lift it out with your fingernail or non-metallic tool.

4: Insert the New Battery

- Place the new battery into the holder with the positive side (+) facing up.
- Be careful not to bend the + terminal or nearby contacts when inserting the battery.

5: Close the Key Fob

- Align the front and back halves.
- Reinsert the screws and tighten them gently — just enough to secure the shell without over-torquing.

6: Test the Key Fob

- Press a button to confirm functionality.
- If unresponsive, double-check the battery orientation or try another new battery.

Optional: Clean the Contacts

- If the battery contacts look dirty or corroded, gently clean them with a cotton swab and a tiny bit of isopropyl alcohol before inserting the new battery.



We are constantly adding new Smart Home integrations to AirTouch to enhance the system's capabilities and your home living experience. Visit airtouch.net.au for updates.



WARNING

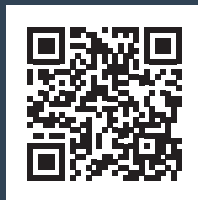
Do not short-circuit the battery terminals.

Dispose of the old battery properly at a battery recycling station – never throw it in the bin.

Have any questions or need assistance?

Visit our Support Centre at help.airtouch.net.au to find the answers you're looking for — or get in touch with **Team AirMate** for all your AirTouch support.

Scan the QR code to visit our help page



WARRANTY

Thank you for purchasing this AirTouch product. In order to protect your rights, please read the following content carefully: The warranty period of our company's products is three years from the date of purchase or longer if local laws impose a longer minimum term, in which case the minimum term is the warranty period. During the warranty period, any faults caused by the product itself or for quality problems that arise under normal usage, AirTouch will provide a free replacement.

- Read all instructions before use. Failure to comply may result in injury or void warranty.
- To read our T&Cs, visit www.airtouch.net.au/airtouch-terms-conditions



Polyaire Pty Ltd.
Naylor House, Level 3 North
191 Pulteney Street, Adelaide,
South Australia, 5000
(08) 8349 8466

polyaire.com.au
airtouch.net.au

