



AirTouch Indoor Camera

User Guide

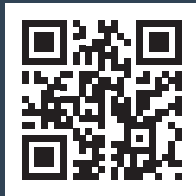
Making the
pleasure of
home comfort
an easy
experience



Thank you for trusting AirTouch Secure.

Need support? Need the App or
want to share your experience?

Scan the QR code or
visit the link below:



[www.airtouch.net.au/
welcome-secure](http://www.airtouch.net.au/welcome-secure)

CONTENTS

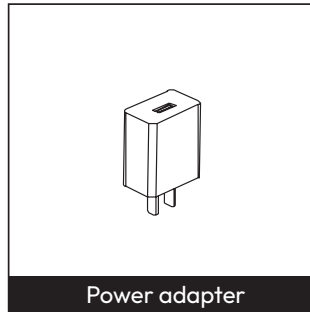
What's Included	4
Introduction	5
Product & Key functions	6
Specifications	7
Installation Instructions	8
Set Up with AirTouch 5	9
Set Up with App	11
Contact Us.....	15
Warranty.....	16

WHAT'S INCLUDED

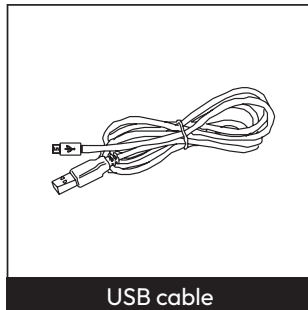
Please consult this checklist for all parts.



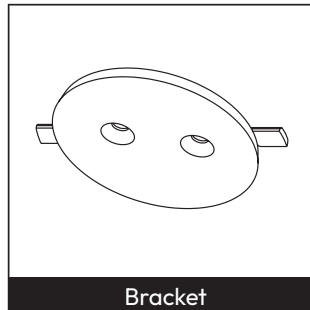
Indoor Wireless Camera



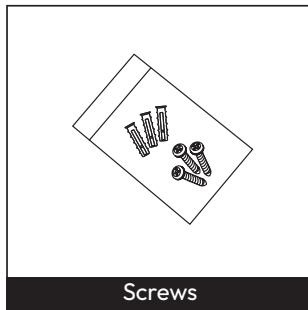
Power adapter



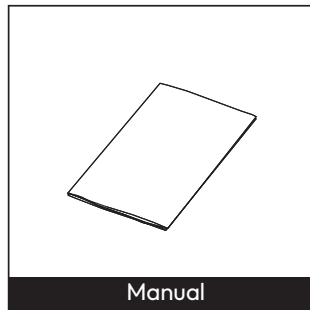
USB cable



Bracket



Screws



Manual

INTRODUCTION



IMPORTANT SAFETY INFORMATION

Please read all safety warnings before operating this product. Failure to follow these instructions may result in injury or damage. Product use and environmental factors may impact published performance and ranges for connectivity and battery usage.

LIABILITY AND DISCLAIMER

All specifications and procedures are correct at time of publication, but are subject to change without notice. Please read the instructions before installing. Polyaire Pty Ltd does not accept any responsibility for loss or damage that may occur as a result of the incorrect installation or operation of this AirTouch Secure product.

Welcome to the AirTouch Indoor Camera, your smart, wireless security camera for peace of mind. Monitor any space with crystal-clear video, remote control, and full-room coverage with pan and tilt.

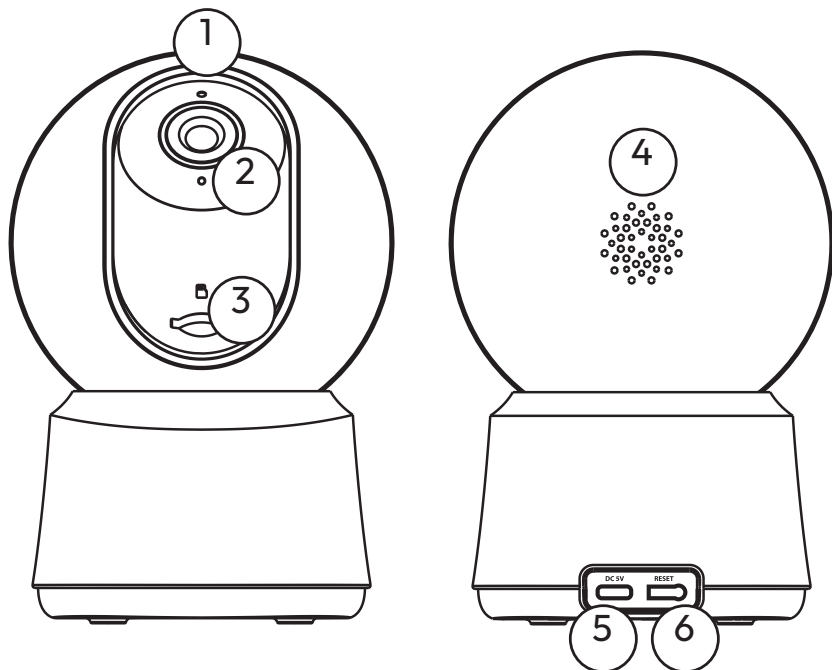
- 5MP (3K) imaging for vivid detail
- Pan 355° and tilt 93° for complete room coverage
- Night vision up to 10m
- Auto-tracking
- Two-way audio to listen and talk
- Dual-band WiFi (2.4GHz & 5GHz) for stable streaming
- Secure, stress-free, and simple to use

Minimal design for intuitive comfort and effortless reliability, to relax and enjoy your space.

COMPLIANCE

- RCM 
- Cyber Security Act 2024 & ETSI EN 303 645
- Australian Consumer Law & safety standards
- Origin: China
- Distributed in Australia by Polyaire Pty Ltd.

PRODUCT & KEY FUNCTIONS



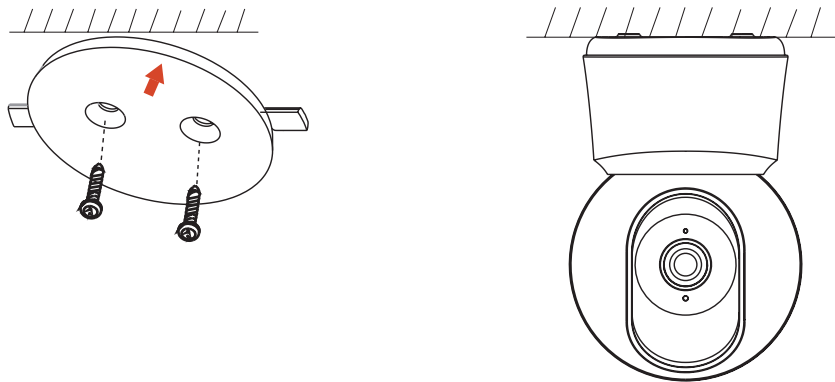
1. Status light
2. Microphones
3. microSD Slot
4. Speaker
5. USB-C
6. Reset

SPECIFICATIONS

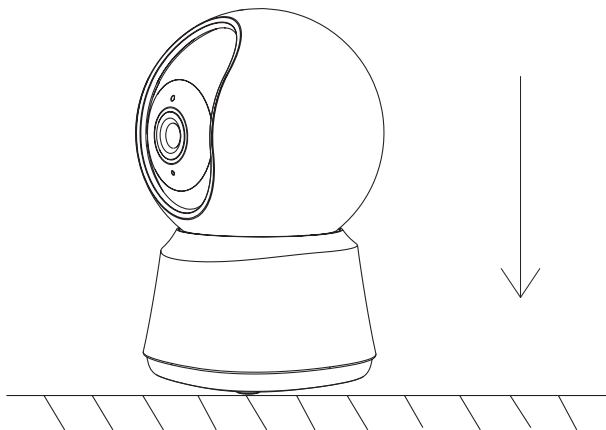
- Camera:
1/3.0" 4MP (3K) CMOS, 2560 × 1440 resolution
- Lens:
4mm @ F2.0, 90°/50°/110° (H/V/D)
- Pan:
0° - 355°
- Tilt:
-15° - 78°
- Night vision:
Up to 10m
- Audio:
Two-way audio (half duplex)
- Wireless:
2.4 GHz/5 GHz WiFi (IEEE802.11 b/g/n/ac/ax)
- Power:
DC 5V/1A (Type-C)
- Storage:
microSD (up to 256GB), Cloud
- Dimensions:
76 × 73 × 117 mm
- Weight:
200g
- Operating Temp:
-20°C to 50°C
- Requires AirTouch 5 or above with AirTouch Home App installed for operation

INSTALLATION INSTRUCTIONS

1. Use the included mounting bracket to fix the camera to a clean surface.



2. Or, install the camera on a flat surface.



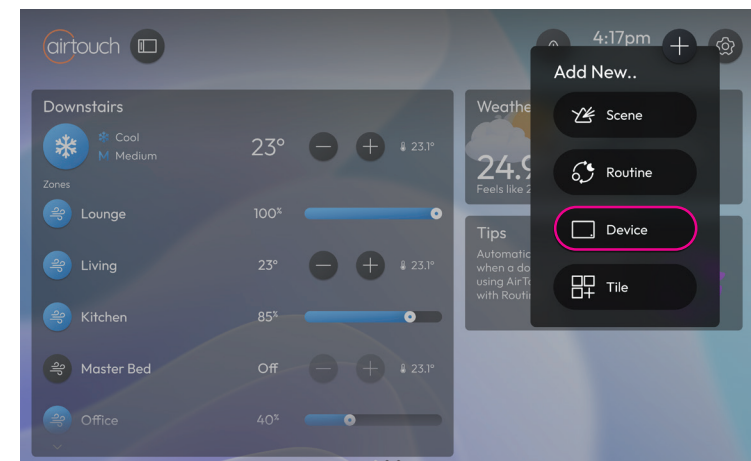
GETTING STARTED

Set Up with AirTouch 5*

*AirTouch Home must be installed on your AirTouch 5 Console before set up. Installation can be completed from the AirTouch 5 settings menu.

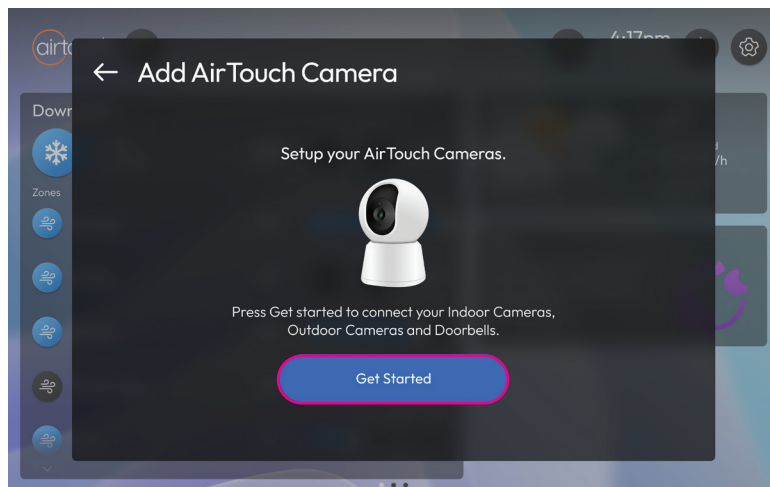
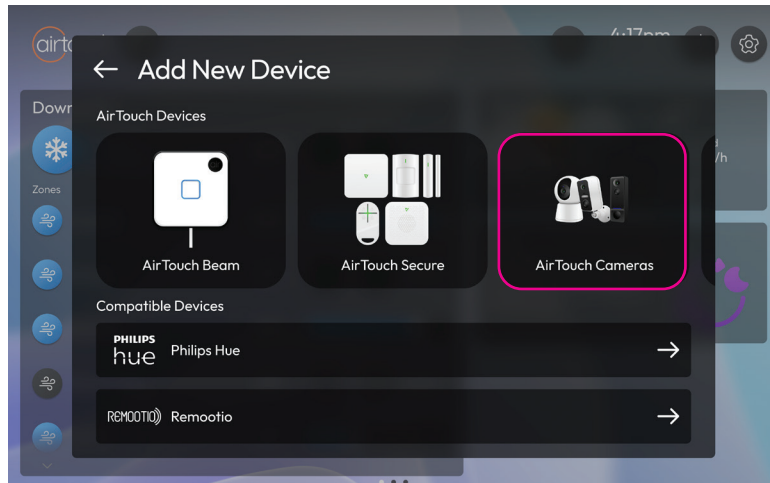
1. Setup device

On the main screen of the AirTouch 5 console, select the '+' icon located in the top right corner, then choose 'Device' from the drop down menu.



3. Select device

After the “Add New Device” page loads select “AirTouch Cameras.” Follow the on-screen prompts to complete the installation and connect the device to AirTouch 5.



Set Up with App*

*AirTouch Home must be installed on your AirTouch 5 Console before you can install the AirTouch Home smart device app.

1. Download

Install the AirTouch Home app for both iOS and Android operating systems. Search for the name “AirTouch Home” in the App Store or Google Play, or scan the QR code to download the App.



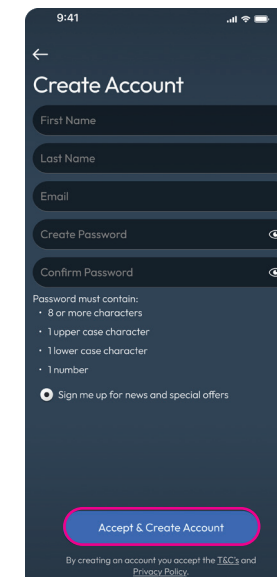
2. Create an Account / Log In

To sign up, open the app, create an account, verify by email, and add your device; to log in, enter your credentials and tap “Login.”

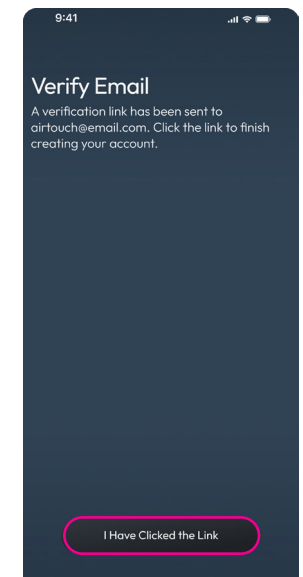
Create an account



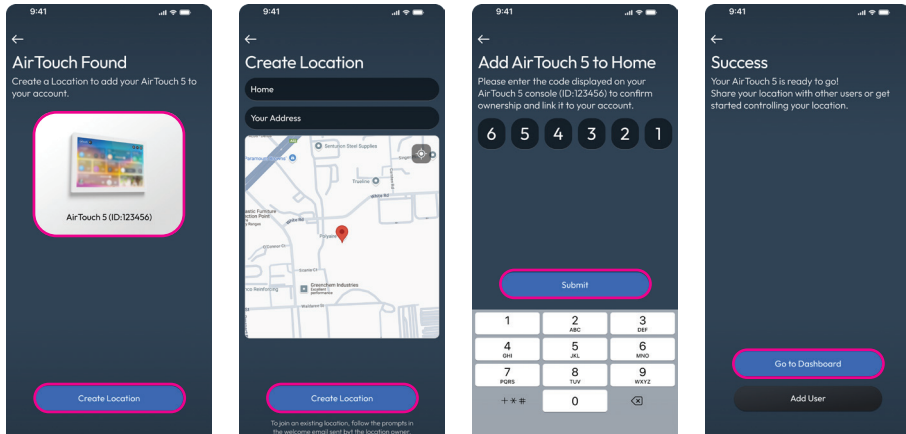
Tap “Create Account”



Fill out the required fields Tap on “Accept & Create Account”



Open the email and click the “Verify Email” link to activate your account.



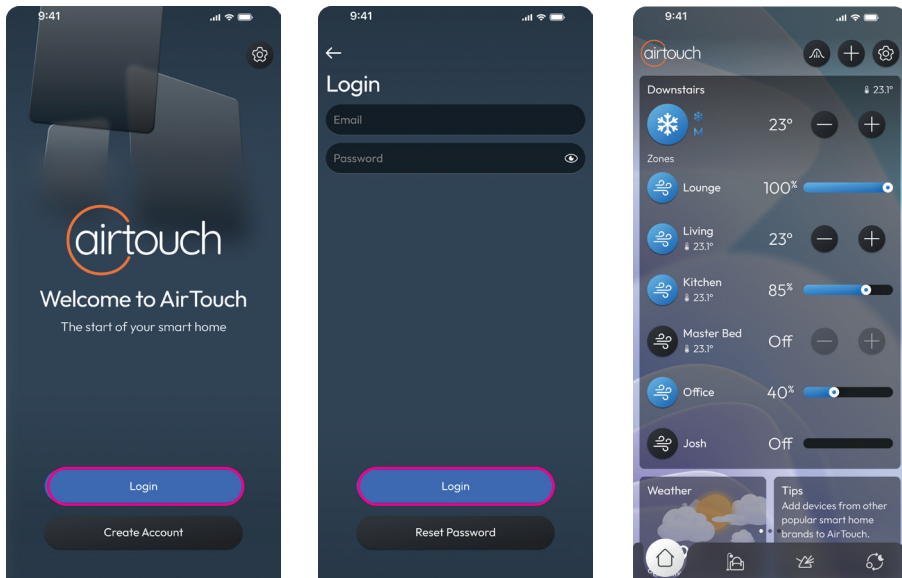
Add your AirTouch device to the account

Create a Location (e.g. your home)

Sync Your AirTouch 5 Devices

You're All Set - tap on "Go to Dashboard"

Log in



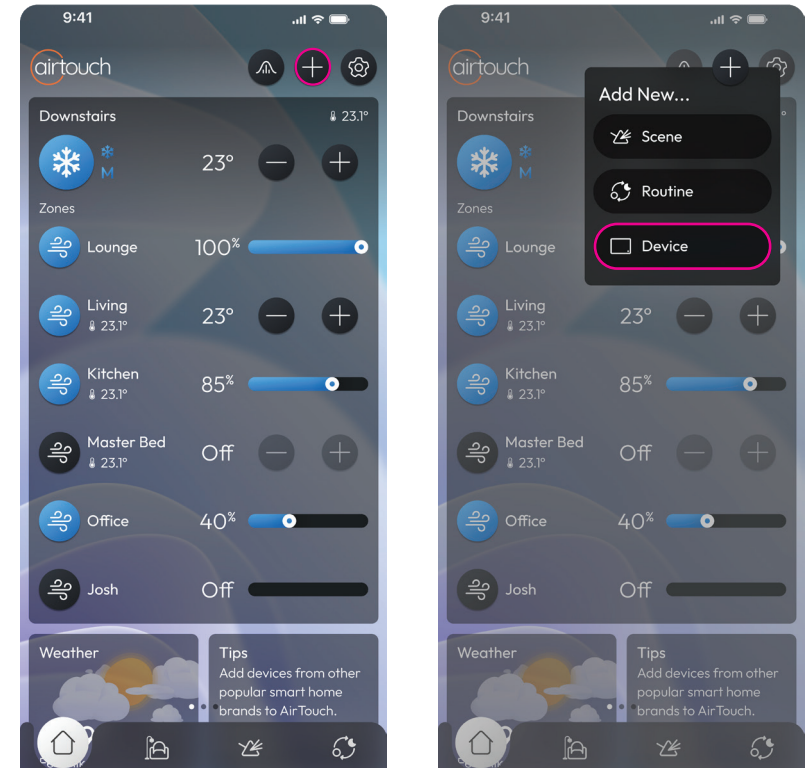
Tap "Login" on the Home Screen

Enter Your Credentials & Tap "Login" You'll be taken to the Dashboard

Dashboard

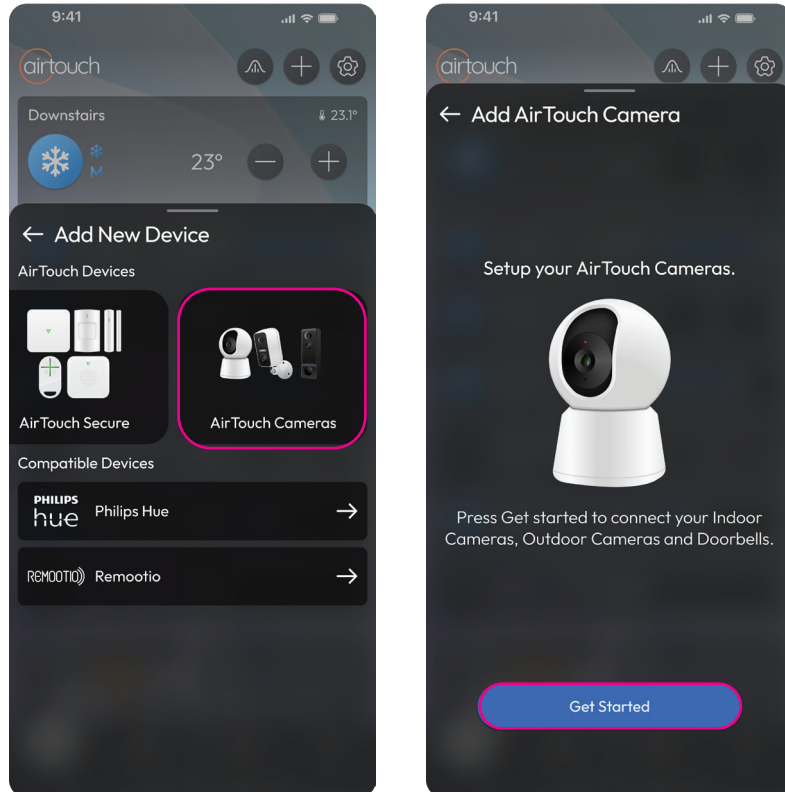
3. Add device

Login to the AirTouch Home app and select the '+' icon located in the top right corner, then choose 'Device' from the drop down menu.



4. Select device

After the “Add New Device” page loads select “AirTouch Cameras.” Follow the on-screen prompts to complete the installation and connect your device to AirTouch Home.



Note:

If camera can't be found, ensure AirTouch Home app has Bluetooth permissions and hold down reset button until status light flashes red.

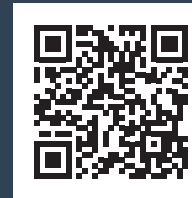


We are constantly adding new Smart Home integrations to AirTouch to enhance the system's capabilities and your home living experience. Visit airtouch.net.au for updates.

Have any questions or need assistance?

Visit our Support Centre at help.airtouch.net.au to find the answers you're looking for — or get in touch with **Team AirMate** for all your AirTouch support.

Scan the QR code to visit our help page



WARRANTY

Thank you for purchasing this AirTouch product. In order to protect your rights, please read the following content carefully: The warranty period of our company's products is one year from the date of purchase or longer if local laws impose a longer minimum term, in which case the minimum term is the warranty period. During the warranty period, any faults caused by the product itself or for quality problems that arise under normal usage, AirTouch will provide a free replacement.

- Read all instructions before use. Failure to comply may result in injury or void warranty.
- To read our T&Cs, visit www.airtouch.net.au/airtouch-terms-conditions



NOTES

A series of horizontal dotted lines providing space for handwritten notes.

Polyaire Pty Ltd.
Naylor House, Level 3 North
191 Pulteney Street, Adelaide,
South Australia, 5000
(08) 8349 8466

polyaire.com.au
airtouch.net.au

