



AirTouch Doorbell

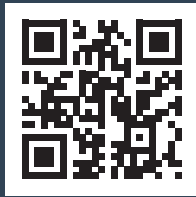
User Guide

Making the
pleasure of
home comfort
an easy
experience



**Thank you for trusting
AirTouch Secure.**

**Need further help?
Need the App or want to
share your experience?
Visit the link or scan the
QR code below:**



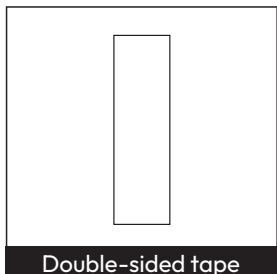
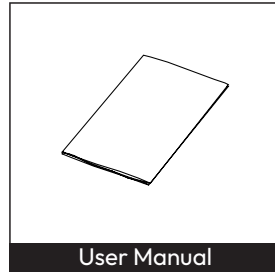
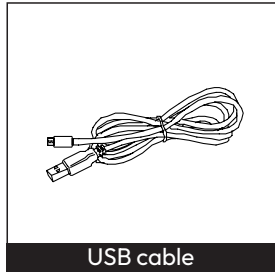
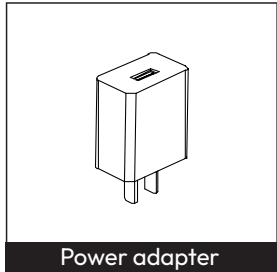
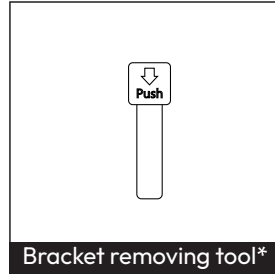
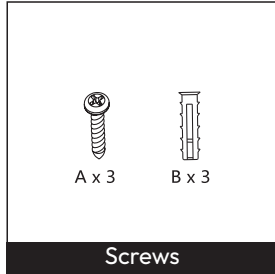
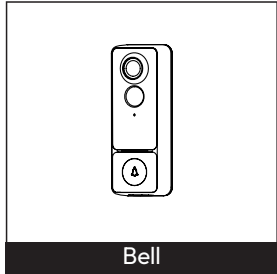
[www.airtouch.net.au/
welcome-secure](http://www.airtouch.net.au/welcome-secure)

CONTENTS

What's Included	4
Introduction	5
Product & Key Functions	6
Specifications	7
Getting Started	8
Set Up with AirTouch 5	9
Set Up with App	11
Chime Pairing	15
Installation Instructions	16
Contact Us.....	18
Warranty.....	19

WHAT'S INCLUDED

Please consult this checklist for all parts.



***Used to remove doorbell from backing plate.**

Note: backing plate is not shown in this image, it comes attached to the camera.

INTRODUCTION



IMPORTANT SAFETY INFORMATION

Please read all safety warnings before operating this product. Failure to follow these instructions may result in injury or damage. Product use and environmental factors may impact published performance and ranges for connectivity and battery usage.

LIABILITY AND DISCLAIMER

All specifications and procedures are correct at time of publication, but are subject to change without notice. Please read the instructions before installing. Polyaire Pty Ltd does not accept any responsibility for loss or damage that may occur as a result of the incorrect installation or operation of this AirTouch Secure product.

Welcome to the AirTouch Doorbell, your intelligent entryway assistant for peace of mind and control. Keep your front door secure and deliveries in sight — view, listen, and talk to visitors anytime, anywhere with the AirTouch Home App.

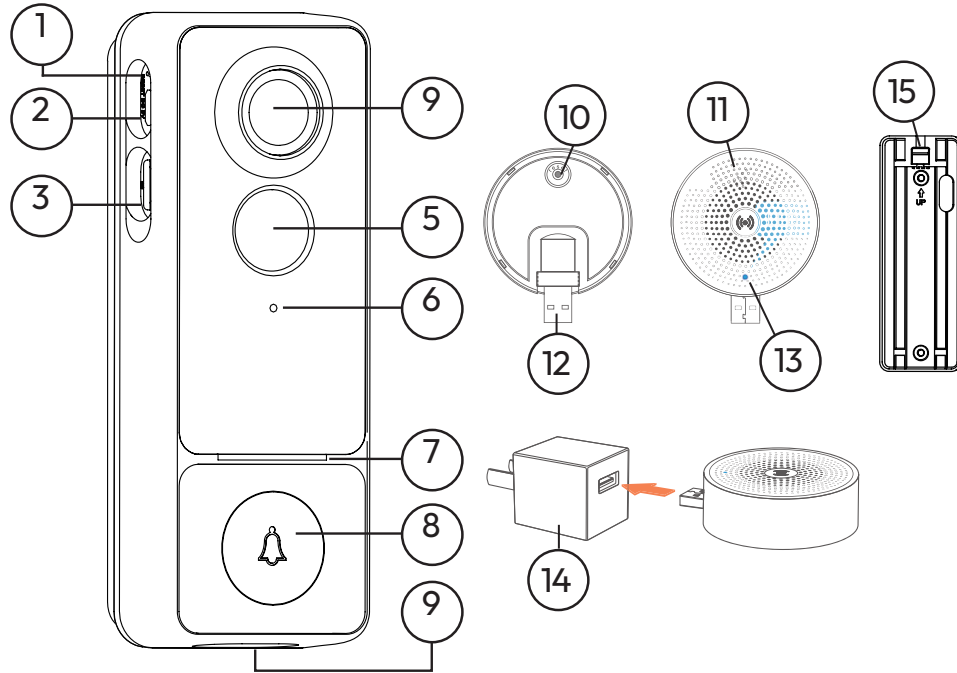
- Clear 3MP (2K) HD imaging
- Speak freely, anytime and anywhere
- Tamper alarm
- Smart control with the AirTouch Home App
- Requires compatible AirTouch installation

Minimal design for intuitive comfort and effortless reliability, to relax and enjoy your space.

COMPLIANCE

- RCM 
- Cyber Security Act 2024 & ETSI EN 303 645
- Australian Consumer Law & safety standards
- Origin: China
- Distributed in Australia by Polyaire Pty Ltd.

PRODUCTS & KEY FUNCTIONS



1. Reset
2. USB-C
3. MicroSD slot
4. Lens
5. PIR
6. Microphone
7. Status light
8. Doorbell button
9. Speaker
10. Reset button
11. Speaker
12. Built-in USB plug
13. LED Indicator / Status light
14. USB power adapter (5V DC)
15. Mounting bracket*

*Mounting Bracket Warning

This doorbell may be mounted on walls, door frames, eaves, or other suitable surfaces using screws and fixings, or suitable adhesive mounting solutions such as 3M tape.

If you choose to drill-mount your doorbell, please ensure the correct tools and fixings are used and that installation is carried out with care. Improper installation may result in damage to walls, surfaces, or surrounding property.

The AirTouch Secure Range warranty does not cover damage caused to walls, surfaces, or property as a result of installation, mounting, removal, or use of this video doorbell. Installation is undertaken at the user's own risk.

See page 8 or visit help.airtouch.net.au for a step-by-step installation guide.

SPECIFICATIONS

- Video:
 - 3MP (2K) HD imaging,
 - 105° wide-angle lens
- Audio:
 - Two-way audio (full duplex)
- Power:
 - 5200 mAh USB-C rechargeable Li-ion batteries
- Chime Power Supply:
 - 5V DC, USB-A
- Wireless:
 - 2.4GHz WiFi
- Night vision:
 - Up to 10m
- Storage:
 - microSD (up to 256GB), (Cloud)
- Dimensions:
 - 52 x 39 x 142mm
- Operating Temp:
 - 18°C to 50°C
- Chime:
 - Included (indoor use)

Requires AirTouch 5 or above with AirTouch Home App installed for operation

GETTING STARTED

Step 1:

Press and hold the Doorbell button (8) for 3-5 seconds, after releasing, the Doorbell will play a short confirmation tone and the Status light (7) will start flashing red, this indicates that the device is in pairing mode

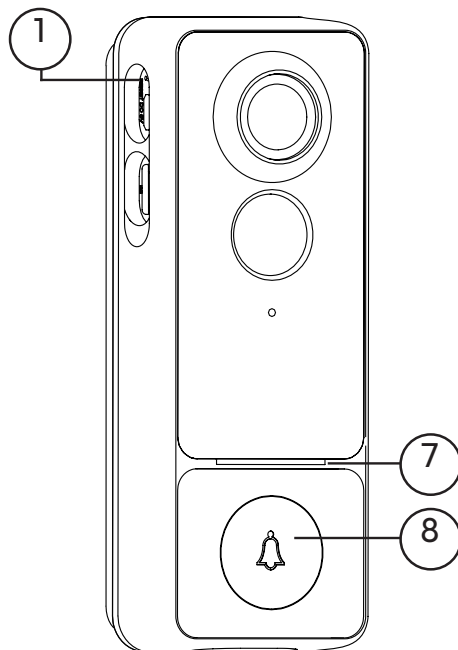
Note: after a few minutes of inactivity in pairing mode the device will go to sleep, press the Doorbell button (8) to enter pairing mode again.

Step 2:

Ensure Bluetooth is enabled for AirTouch Home in your device settings, then click 'Get Started' and follow the prompts on screen to onboard your device.

Factory Reset:

To factory reset the Doorbell, press and hold the Reset (1) button for 5 seconds, the Doorbell will play a short confirmation tone and the Status light (7) will start flashing red, this indicates that the device is in pairing mode



Set Up with AirTouch 5*

*AirTouch Home must be installed on your AirTouch 5 Console before set up. Installation can be completed from the AirTouch 5 settings menu.

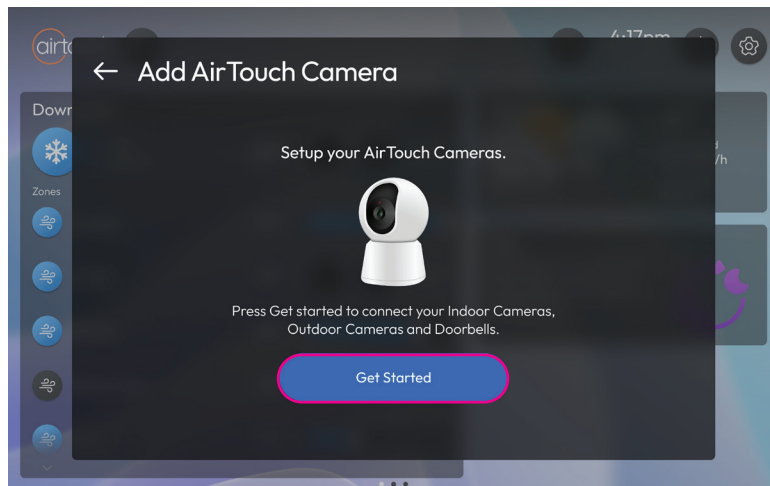
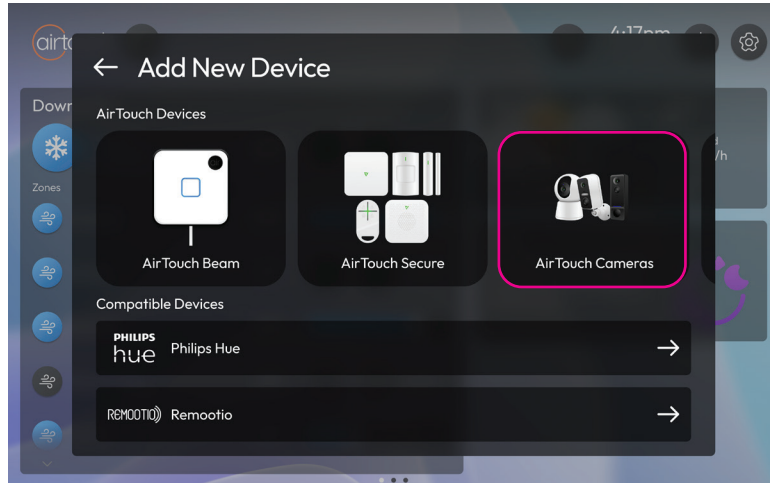
1. Setup device

On the main screen of the AirTouch 5 console, select the '+' icon located in the top right corner, then choose 'Device' from the drop down menu.



2. Add device

After the “Add New Device” page loads select “AirTouch Cameras.” Follow the on-screen prompts to complete the installation and connect the device to AirTouch 5.



Set Up with App*

*AirTouch Home must be installed on your AirTouch 5 Console before you can install the AirTouch Home smart device app.

1. Download

Install the AirTouch Home app for both iOS and Android operating systems. Search for the name “AirTouch Home” in the App Store or Google Play, or scan the QR code to download the App.



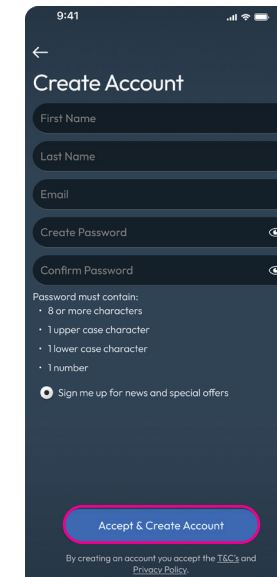
2. Create an Account / Log In

To sign up, open the app, create an account, verify by email, and add your device; to log in, enter your credentials and tap “Login.”

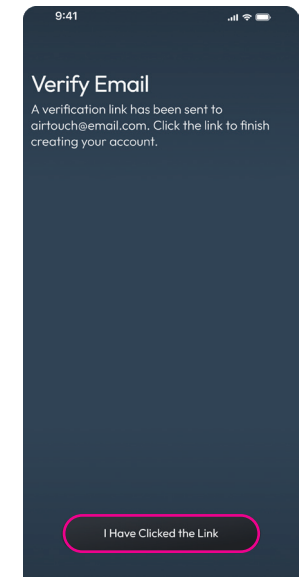
Create an account



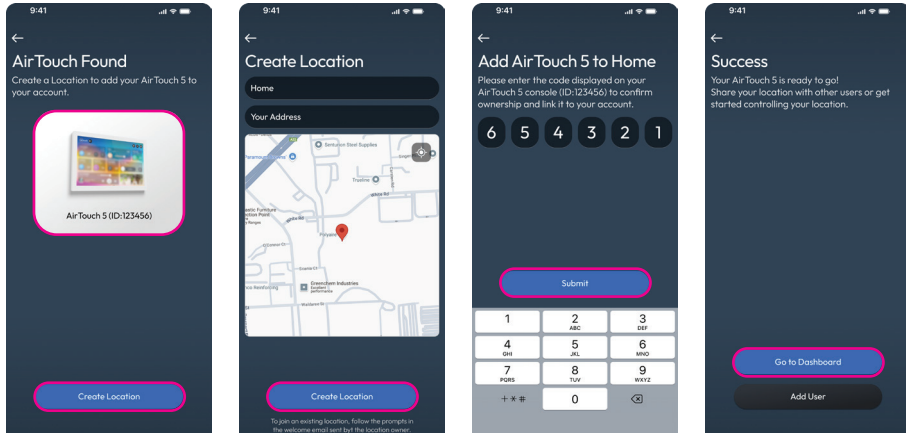
Tap “Create Account”



Fill out the required fields Tap on “Accept & Create Account”



Open the email and click the “Verify Email” link to activate your account.



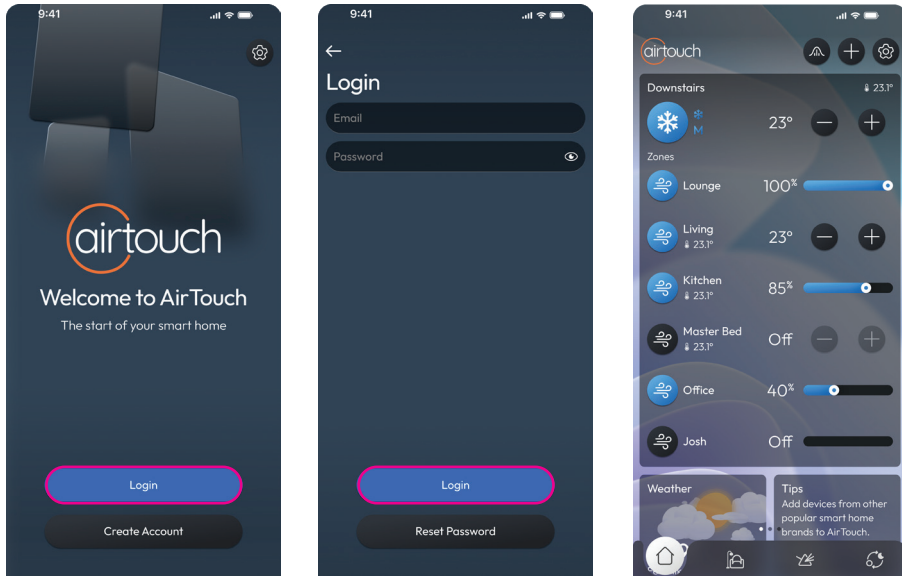
Add your AirTouch device to the account

Create a Location (e.g. your home)

Sync Your AirTouch 5 Devices

You're All Set - tap on "Go to Dashboard"

Log in



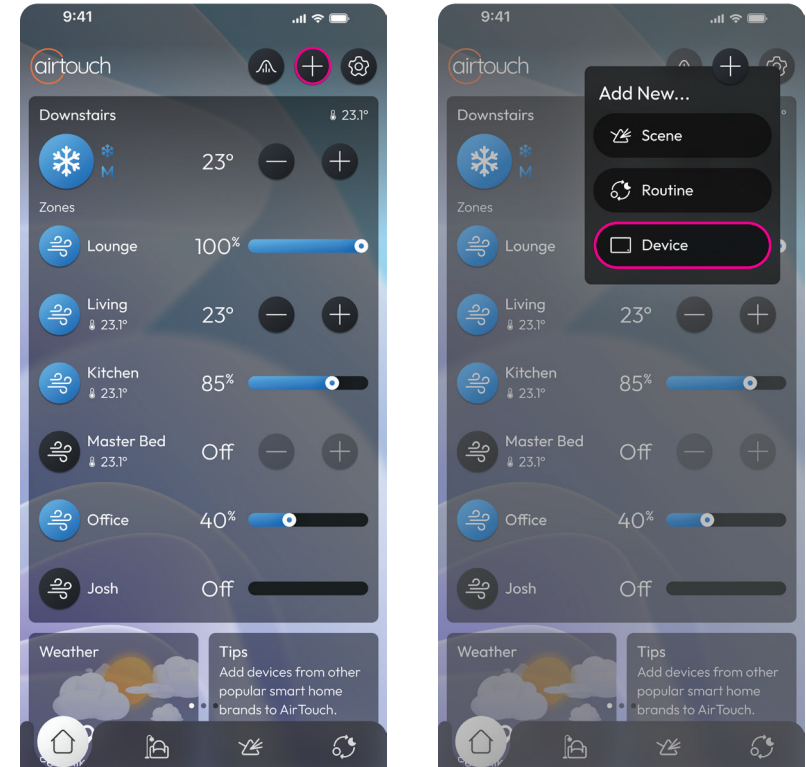
Tap "Login" on the Home Screen

Enter Your Credentials & Tap "Login" You'll be taken to the Dashboard

Dashboard

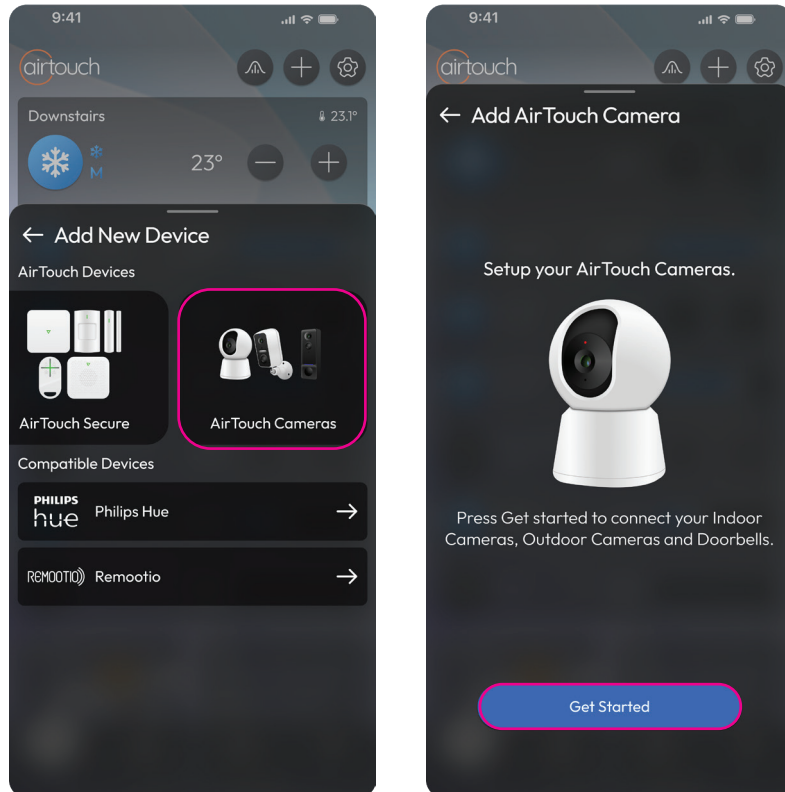
3. Add device

Login to the AirTouch Home app and select the '+' icon located in the top right corner, then choose 'Device' from the drop down menu.



4. Select device

After the “Add New Device” page loads select “AirTouch Cameras.” Follow the on-screen prompts to complete the installation and connect your device to AirTouch Home.



We are constantly adding new Smart Home integrations to AirTouch to enhance the system's capabilities and your home living experience. Visit airtouch.net.au for updates.

Chime Pairing

Pair Via Pressing Ring Button

Note: Doorbell and Chime have been already been paired to work together out of the box. But if there are any issues with this or your chime has been reset, follow the below instructions.

Step 1:

Power On Devices

Ensure your doorbell is powered on and onboarded to AirTouch Home. Then, connect power to your Chime.

Step 1:

Enter Pairing Mode

Short-press the RESET button on the Chime. The blue indicator light will begin blinking, indicating it is in pairing mode.

Step 3:

Open the AirTouch Home App

Within AirTouch Home app, go to: **Settings > Works With > AirTouch Cameras.** Select the doorbell you wish to pair with, then choose **Chime Settings > Pair Chime.**

Step 4:

Start Pairing

Select Wireless Chime, then tap Chime Pairing. Confirm the Chime's blue light is blinking.

Step 5:

Pair the Devices

Tap Pair in the app. The Chime will automatically pair with the Doorbell.

Step 6:

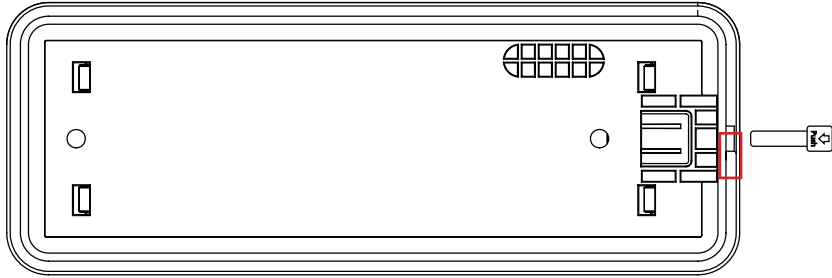
Test the Chime

Press the Doorbell button. The Chime should sound, and the blue light will turn solid, indicating successful pairing.

INSTALLATION INSTRUCTIONS

NOTE: Ensure Doorbell is fully charged and is paired with AirTouch Home before you start installation. Use the AirTouch Home mobile app to view the feed to get the camera in the correct position before fixing to the wall.

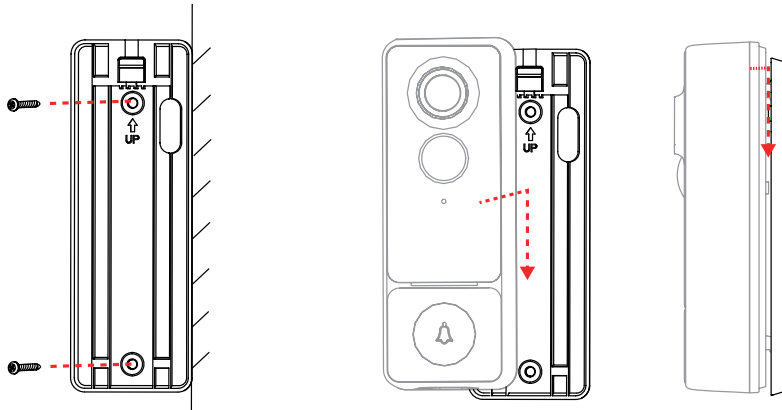
Bracket Removing



1. Insert the bracket removing tool into the slot highlighted in the image above with a red box, and the bracket will pop out automatically.

TIP: The recommended mounting height for smart doorbells is typically 1.2 metres to 1.6 metres from the ground.

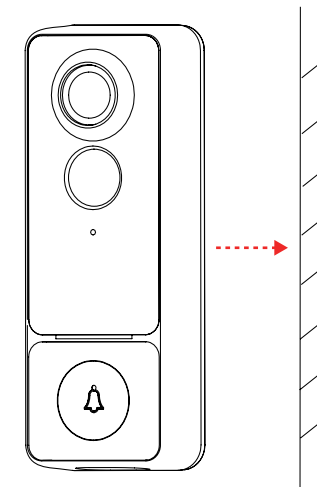
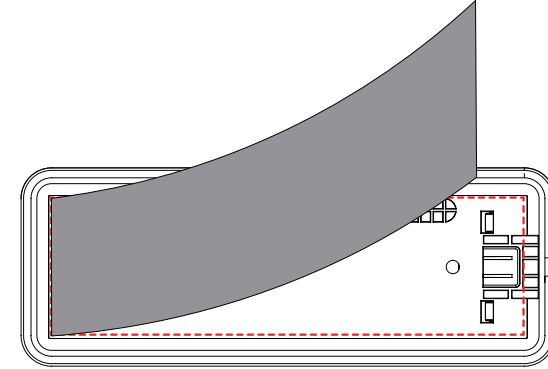
Bracket Installation (Screw)



2. Install the bracket to the wall using the provided screws.
3. Position the doorbell camera adjacent to the bracket and align the rear of the doorbell camera with the bracket.
4. Push the doorbell firmly downward until it locks into place.

TIP: The recommended mounting height for smart doorbells is typically 1.2 metres to 1.6 metres from the ground.

Bracket Installation (Tape)

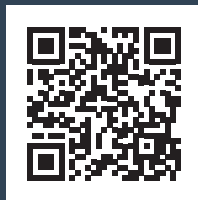


5. Peel off one side of the adhesive tape and attach it to the area indicated by the red box on the doorbell, as shown above.
6. Remove the second side of the tape backing and press it firmly against the wall.

Have any questions or need assistance?

Visit our Support Centre at help.airtouch.net.au to find the answers you're looking for — or get in touch with **Team AirMate** for all your AirTouch support.

Scan the QR code to visit our help page



WARRANTY

Thank you for purchasing this AirTouch product. In order to protect your rights, please read the following content carefully: The warranty period of our company's products is one year from the date of purchase or longer if local laws impose a longer minimum term, in which case the minimum term is the warranty period. During the warranty period, any faults caused by the product itself or for quality problems that arise under normal usage, AirTouch will provide a free replacement.

- Read all instructions before use. Failure to comply may result in injury or void warranty.
- To read our T&Cs, visit www.airtouch.net.au/airtouch-terms-conditions



Polyaire Pty Ltd.
Naylor House, Level 3 North
191 Pulteney Street, Adelaide,
South Australia, 5000
(08) 8349 8466

polyaire.com.au
airtouch.net.au

