



AirTouch Secure Door/Window Sensor

User Guide

Making the
pleasure of
home comfort
an easy
experience



**Thank you for trusting
AirTouch Secure.**

**Need further help?
Need the App or want to
share your experience?
Visit the link or scan the
QR code below:**



[www.airtouch.net.au/
welcome-secure](http://www.airtouch.net.au/welcome-secure)

CONTENTS

Introduction	4
Product & Key Functions	5
Installation Instructions	6
Specifications	8
Set up with AirTouch 5	9
Set up with App	11
Replacing the Battery	15
Contact Us	16
Warranty	17

INTRODUCTION



IMPORTANT SAFETY INFORMATION

Please read all safety warnings before operating this product. Failure to follow these instructions may result in injury or damage. Product use and environmental factors may impact published performance and ranges for connectivity and battery usage.

LIABILITY AND DISCLAIMER

All specifications and procedures are correct at time of publication, but are subject to change without notice. Please read the instructions before installing. Polyaire Pty Ltd does not accept any responsibility for loss or damage that may occur as a result of the incorrect installation or operation of this AirTouch Secure product.

Welcome to your AirTouch Secure Door/Window Sensor, a wireless magnetic contact sensor that detects and reports the state of doors and windows in real time. Triggered, the sensor sends alerts to your applications, and activates your security system.

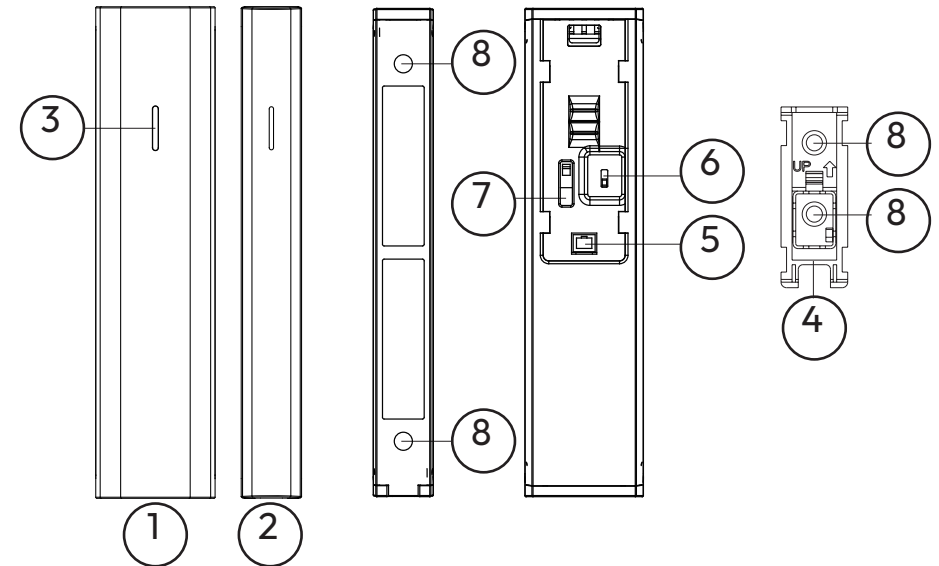
- 2 cm activation distance for reliable detection
- 30m typical indoor range
- Up to 10-year battery life
- Secure, stress-free, and simple to use

Minimal design for intuitive comfort and effortless reliability, to relax and enjoy your space.

COMPLIANCE

- RCM 
- Cyber Security Act 2024 & ETSI EN 303 645
- Australian Consumer Law & safety standards
- Origin: China
- Distributed in Australia by Polyaire Pty Ltd.

PRODUCT & KEY FUNCTIONS



1. Sensor
2. Magnet
3. Indicator
4. Mounting bracket*
5. External sensor input interface
6. Power on/off switch
7. Tamper protection button
8. Screw hole

*Mounting Bracket Warning

This product may be mounted on window frames using screws, fixings, or suitable adhesive mounting solutions such as 3M tape.

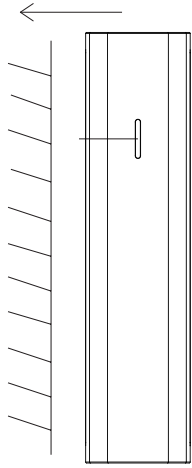
If you prefer to drill-mount your sensor, please ensure the correct tools and fixings are used and that installation is carried out carefully. Installation may require drilling or adhering to window frames or other surfaces. Improper installation may cause damage to property.

The AirTouch Secure Range warranty does not cover damage to walls, window frames, surfaces, or property resulting from installation, mounting, removal, or use of this product. Installation is undertaken at the user's own risk.

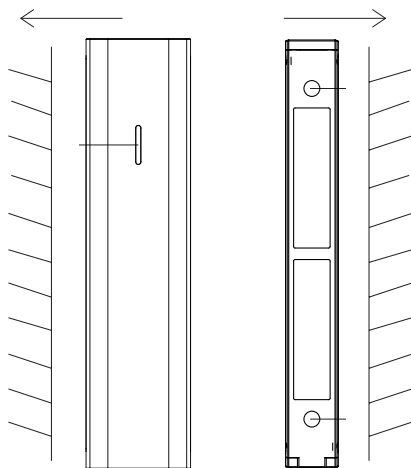
Visit help.airtouch.net.au for a step-by-step installation guide.

INSTALLATION INSTRUCTIONS

1. Mount the Sensor securely on the fixed frame.



2. Align the Magnet on the moving part.



3. Ensure correct orientation by following the reference image precisely. Placing the magnet on the wrong side of the sensor may result in inconsistent device operation. Improper alignment may result in malfunction. Maintain a maximum gap of 2 cm between the sensor and the magnet.



SPECIFICATIONS

- Sensor size:
22 × 22 × 89mm
- Magnet size:
10 × 12 × 89mm
- Comm. protocol:
CoSS
- Activation distance:
2 cm
- Comm. distance:
30m typical indoor range
- Operating temp:
-5~45°C
- Operating humidity:
5~90%
- Material: ABS+PC
- Battery type:
CR123A 3V*
- Standby time:
Up to 10-year battery life
- For indoor use only

Requires AirTouch 5 or above with AirTouch Home App installed for operation.



***WARNING THIS PRODUCT CONTAINS A BATTERY**

If swallowed, a lithium battery can cause severe or fatal injuries within 2 hours. Keep batteries out of reach of children. If you think batteries may have been swallowed or placed inside any part of the body, seek immediate medical attention.

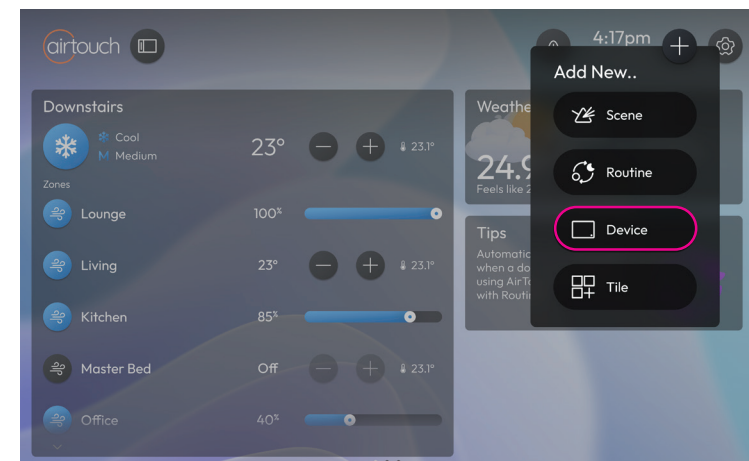
GETTING STARTED

Set Up with AirTouch 5*

*AirTouch Home must be installed on your AirTouch 5 Console before set up. Installation can be completed from the AirTouch 5 settings menu.

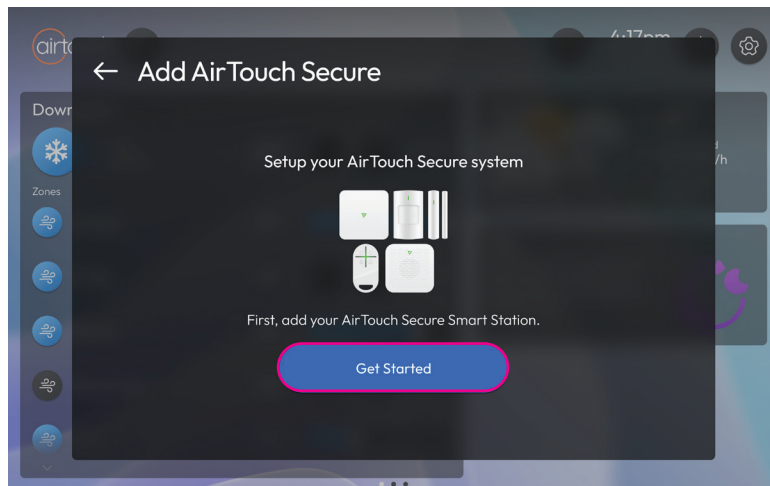
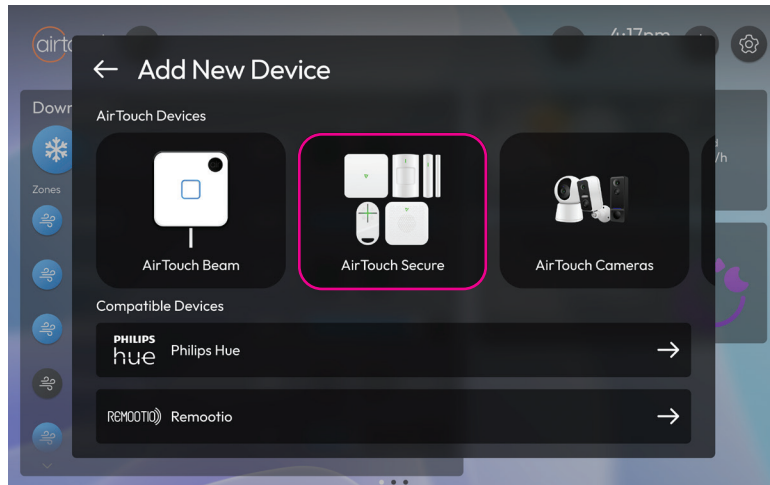
1. Setup device

On the main screen of the AirTouch 5 console, select the '+' icon located in the top right corner, then choose 'Device' from the drop down menu.



2. Select device

After the “Add New Device” page loads select “AirTouch Secure.” Follow the on-screen prompts to complete the installation and connect the device to AirTouch 5.



Set Up with App*

*AirTouch Home must be installed on your AirTouch 5 Console before you can install the AirTouch Home smart device app.

1. Download

Install the AirTouch Home app for both iOS and Android operating systems. Search for the name “AirTouch Home” in the App Store or Google Play, or scan the QR code to download the App.



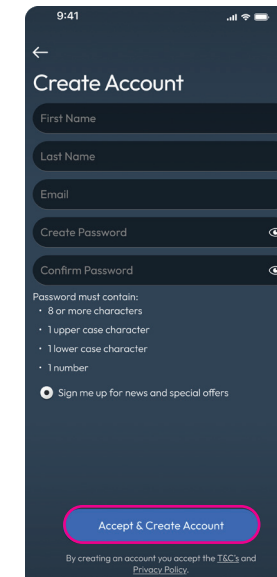
2. Create an Account / Log In

To sign up, open the app, create an account, verify by email, and add your device; to log in, enter your credentials and tap “Login.”

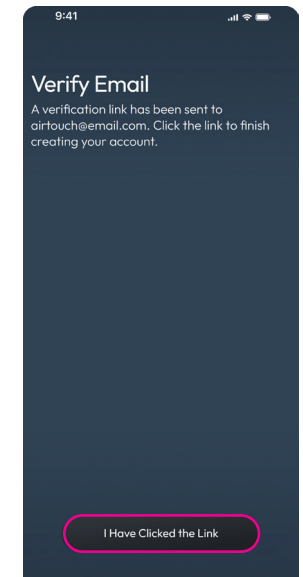
Create an account



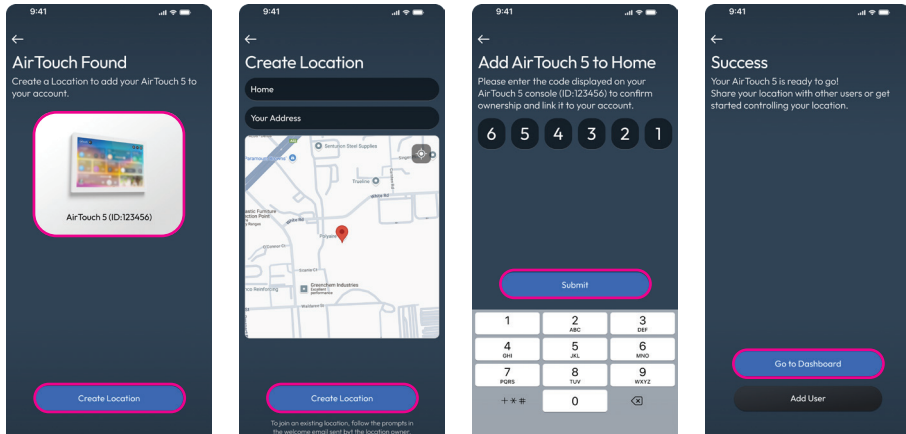
Tap “Create Account”



Fill out the required fields Tap on “Accept & Create Account”



Open the email and click the “Verify Email” link to activate your account.



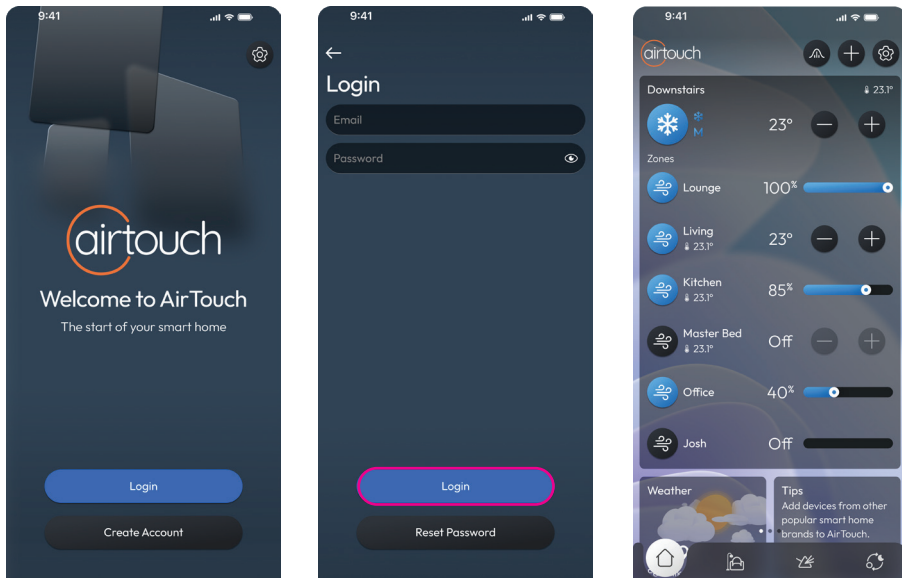
Add your AirTouch device to the account

Create a Location (e.g. your home)

Sync Your AirTouch 5 Devices

You're All Set - tap on "Go to Dashboard"

Log in



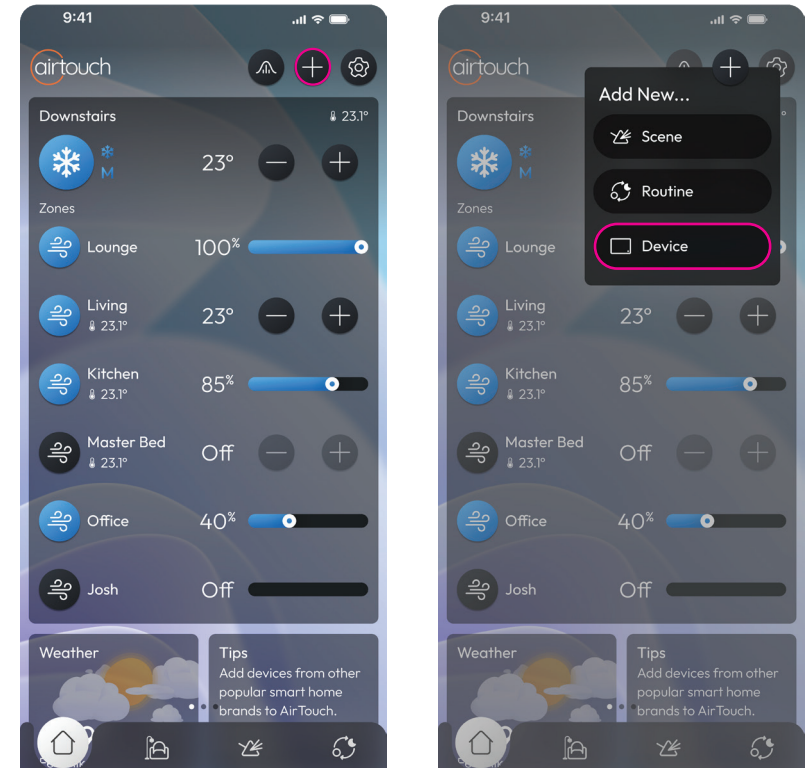
Tap "Login" on the Home Screen

Enter Your Credentials & Tap "Login" You'll be taken to the Dashboard

Dashboard

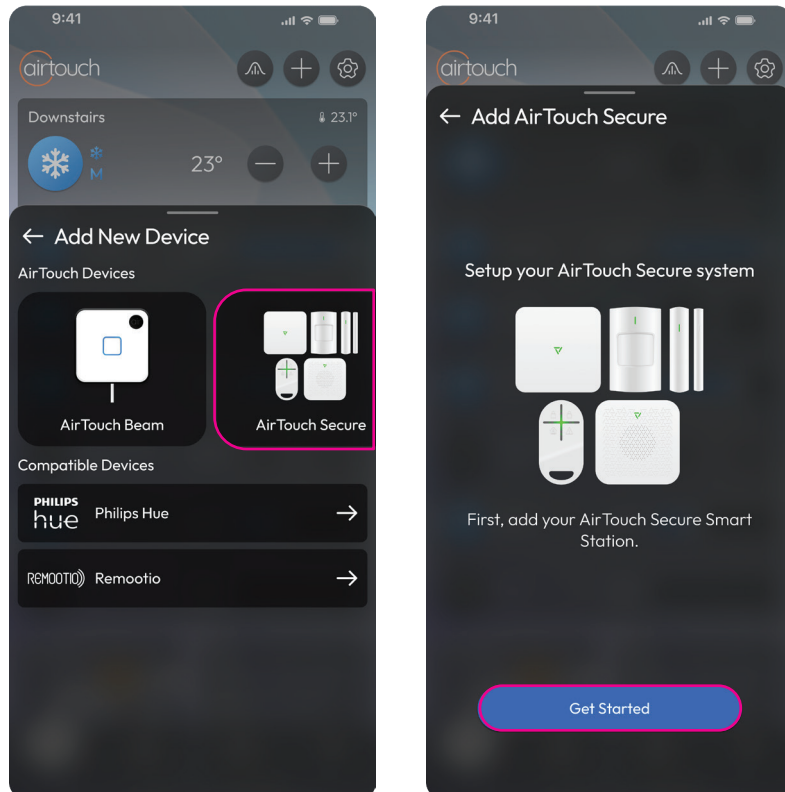
3. Add device

Login to the AirTouch Home app and select the '+' icon located in the top right corner, then choose 'Device' from the drop down menu.



4. Select device

After the “Add New Device” page loads select “AirTouch Secure.” Follow the on-screen prompts to complete the installation and connect your device to AirTouch Home.



REPLACING THE BATTERY

What You'll Need:

- Replacement battery (CR123A 3V*)
- Small Flat Head screwdriver (if cover is clipped)

Step-by-Step Guide:

1. Disarm the system
Open the Battery Compartment
- Gently pry open the sensor casing using a fingernail or a small screwdriver.
Remove the Old Battery
- Remove the depleted battery and dispose of it responsibly.
2. Insert the New Battery
- Connect the new battery to the terminal, matching the polarity (+/-). Ensure a snug, secure fit inside the battery compartment.
3. Reassemble and Mount the Unit
- Snap the cover back on until it clicks securely.
4. Test Functionality
- Open/close the door or window and check if the system registers the activity.

Note

- Always use a high-quality lithium battery for longer life.
- Dispose of the old battery safely – lithium batteries can be hazardous.
- If the sensor still doesn't respond, try re-pairing it to the hub after replacing the battery.



We are constantly adding new Smart Home integrations to AirTouch to enhance the system's capabilities and your home living experience. Visit AirTouch.net.au for updates.

*WARNING

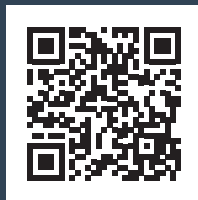
Do not short-circuit the battery terminals.

Dispose of the old battery properly at a battery recycling station – never throw it in the bin.

Have any questions or need assistance?

Visit our Support Centre at help.airtouch.net.au to find the answers you're looking for — or get in touch with **Team AirMate** for all your AirTouch support enquiries.

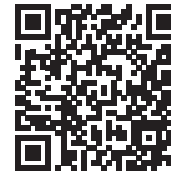
Scan the QR code to visit our help page



WARRANTY

Thank you for purchasing this AirTouch product. In order to protect your rights, please read the following content carefully: The warranty period of our company's products is three years from the date of purchase or longer if local laws impose a longer minimum term, in which case the minimum term is the warranty period. During the warranty period, any faults caused by the product itself or for quality problems that arise under normal usage, AirTouch will provide a free replacement.

- Read all instructions before use. Failure to comply may result in injury or void warranty.
- To read our T&Cs, visit www.airtouch.net.au/airtouch-terms-conditions



Polyaire Pty Ltd.
Naylor House, Level 3 North
191 Pulteney Street, Adelaide,
South Australia, 5000
(08) 8349 8466

polyaire.com.au
airtouch.net.au

